



KTSL-TK1-USB TIME KEEPER

INSTALLATION AND OPERATING INSTRUCTIONS

Read and understand all warnings and notes stated below before proceeding with installation.

- Operating temperature: -40°C/-40°F to 45°C/113°F
- Do not expose directly to water.
- Not for outdoor use.

Warning: Install/use in accordance with appropriate electrical codes and regulations.

Warning: If you are not sure about any part of these instructions, consult a qualified electrician.

Warning: To avoid fire, shock, or death, turn off power at circuit breaker or fuse box and test to ensure that the power is off before wiring. Installation without cutting power may also cause device malfunction.

Cautions:

- Do not attempt to disassemble or repair.
- Clean outer surface with a damp cloth only.



INSTALLING AND COMMISSIONING

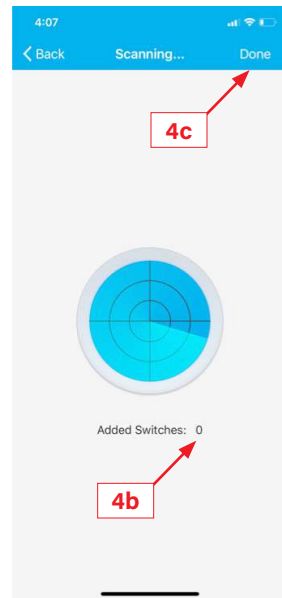
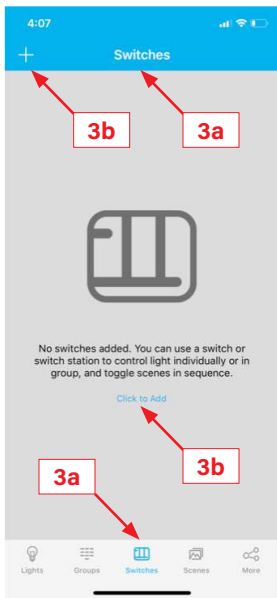
1. Search for and download the SmartLoop app (logo pictured to right) from the App store or Google Play store.
2. Plug the Time Keeper into any permanently powered USB port within range of another node in the SmartLoop region.
3. In the SmartLoop app:
 - a. Go to the 'Switches' menu* (see illustration below: 3a).
 - b. Press the '+' sign or 'Click to Add' to search for switches (see illustration below: 3b).
4. On the Time Keeper and in the SmartLoop app:
 - a. On the Time Keeper press and hold the button for 3 seconds to enter pairing mode (see illustration to the right: 4a).



SmartLoop Website



- a. On the Time Keeper press and hold the button for 3 seconds to enter pairing mode (see illustration to the right: 4a).
 - b. On the app screen, the device should appear next to 'Added Switches' momentarily (see illustration to the right: 4b).
 - c. Press 'Done' to confirm (see illustration to the right: 4c).
- The Time Keeper will automatically exit pairing mode after 30 seconds.
5. For further system commissioning, see *Quick-Start Guide* and *User Manual* at www.keystonetech.com.



* The Time Keeper appears and operates within the app as a switch giving the user an additional soft keypad for control

SAVE THESE INSTRUCTIONS



KTSL-TK1-USB TIME KEEPER

FCC STATEMENT

Changes or modifications not expressly approved by the party responsible for compliance could void the user's authority to operate the equipment. This device complies with Part 15 of the FCC Rules. Operation is subject to the following two conditions: (1) this device may not cause harmful interference, and (2) this device must accept any interference received, including interference that may cause undesired operation. This equipment has been tested and found to comply with the limits for a Class B digital device, pursuant to part 15 of the FCC Rules. These limits are designed to provide reasonable protection against harmful interference in a residential installation.

This equipment generates, uses and can radiate radio frequency energy and, if not installed and used in accordance with the instructions, may cause harmful interference to radio communications. However, there is no guarantee that interference will not occur in a particular installation. If this equipment does cause harmful interference to radio or television reception, which can be determined by turning the equipment off and on, the user is encouraged to try to correct the interference by one or more of the following measures:

- Reorient or relocate the receiving antenna.
- Increase the separation between the equipment and receiver.
- Connect the equipment into an outlet on a circuit different from that to which the receiver is connected.
- Consult the dealer or an experienced radio/TV technician for help.

RF EXPOSURE

This equipment must be installed and operated in accordance with provided instructions and the antenna(s) used for this transmitter must be installed to provide a separation distance of at least 20 cm from all persons and must not be co-located or operating in conjunction with any other antenna or transmitter. End-users and installers must be provided with antenna installation instructions and transmitter operating conditions for satisfying RF exposure compliance.

SAVE THESE INSTRUCTIONS