



**DIRECT DRIVE D2**  
DOUBLE-ENDED LINE VOLTAGE LED TUBES

## KT-LED40T8HO-96GC-8XX-D2

### T8 LED LAMP

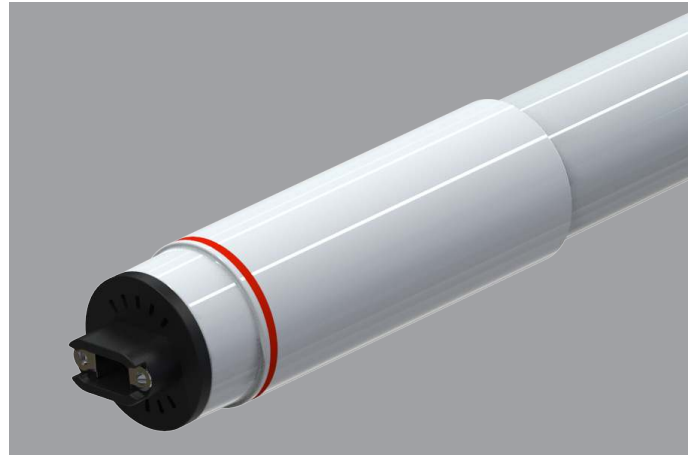
#### DESCRIPTION

40W T8HO/T12HO LED | 4000K | >80 CRI | High Efficiency | 8 Foot



**10 YEAR**  
LIMITED WARRANTY

<b>LAMP TYPE:</b> Linear
<b>BULB TYPE:</b> T8HO/T12HO LED
<b>BASE TYPE:</b> R17d (Recessed Double Contact)
<b>WATTAGE:</b> 40W
<b>COLOR TEMPERATURE:</b> 4000K
<b>COLOR RENDERING INDEX (CRI):</b> >80
<b>WARRANTY:</b> 10 Year Limited



#### PRODUCT FEATURES

- Replacement for conventional T8/T12 8-foot, single-pin fluorescent lamp
- Double-ended line voltage wiring: Connect power to each end for simplified installation
- 50,000+ hour lifetime
- Approximately 50% more energy efficient than standard F96T12 lamps
- Environmentally friendly: No mercury used
- NSF listed: NSF/ANSI Standard 2: Food equipment, splash zone (component level—not for direct food zone without additional fixture considerations)
- Compatible with KT-EMRG-LED-12-1200-AC and KT-EMRG-LED-12-1200-AC /DF LED emergency back ups
- Improved Lamp Durability with Shatterproof Coated Glass, designed to pass drop tests of 6' on hard surface
- Includes 1 C-clips to be installed with the lamps into the fixture ballast cover to prevent any potential undesired lamp twisting or sagging
- Frosted lens eliminates pixelation
- UL classified
- Operating Temperature: (-20°C/-4°F) (45°C/113°F)
- Working Humidity: 30%-85%
- Integral driver (isolated): Eliminates the need for external driver or ballast
- 130+ lumens per Watt
- Instant startup
- Not rated for use in Vapor Tight style fixtures

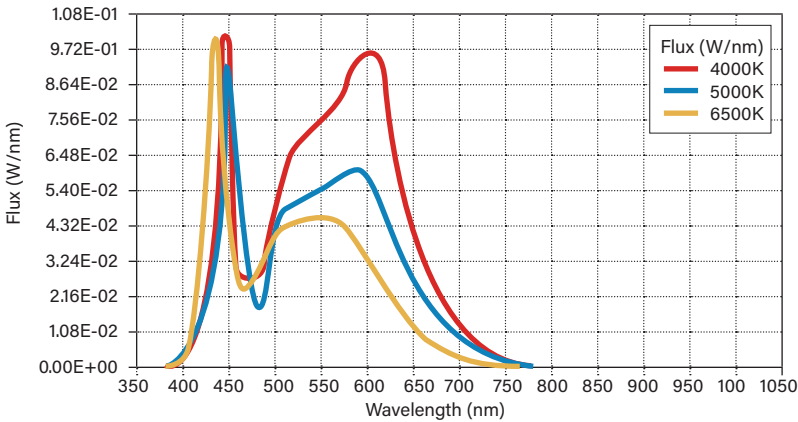
#### ELECTRICAL AND PERFORMANCE SPECIFICATIONS

Catalog Number	Input Voltage	Power Consumption	Color Temperature (CCT)	Luminous Flux	Efficacy	Beam Angle	Power Factor	Input Current	Rated Life
KT-LED40T8HO-96GC-840-D2	120-277 Vac	40W	4000K	5500 lm	136 lm/W	325°	>0.9	0.33 @ 120V 0.14 @ 277V	L70 (Hours) 50,000
KT-LED40T8HO-96GC-850-D2			5000K	5500 lm	136 lm/W				
KT-LED40T8HO-96GC-865-D2			6500K	5500 lm	136 lm/W				

# KT-LED40T8HO-96GC-8XX-D2

## T8 LED LAMP

**SPECTRAL DISTRIBUTION**



**WIRING DIAGRAMS**

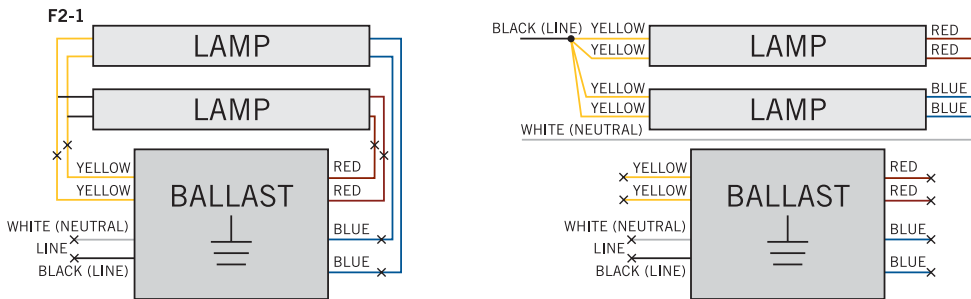
**Double Ended Line Voltage Wiring**



**For Retrofit Applications (see below notes)**

1. Identify ballast configuration as shown below and cut all wires connected to the ballast accordingly.

**Typical Ballast Configurations:**



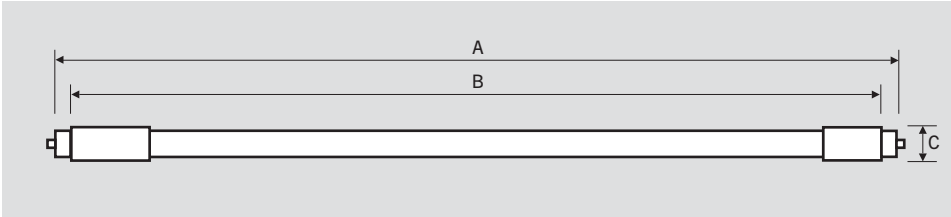
2. Confirm that the lampholders in the fixture are R17d Double Recessed Contact lampholders. These DirectDrive LED tubes require R17d Double Recessed Contact lampholders.
3. Rewire the fixture using existing lampholders as shown above according to the original ballast wiring configuration.



# KT-LED40T8HO-96GC-8XX-D2

## T8 LED LAMP

**PHYSICAL CHARACTERISTICS**



**LAMP DIMENSIONS**

<b>A (Body Length)</b>	93.31"
<b>B (Illuminated Length)</b>	87.41"
<b>C End Cap Diameter</b>	1.31"
<b>D Dimension</b>	1.08"

**NOMINAL LENGTH:** 96"

**BASE TYPE:** R17d (Recessed Double Contract)

**ORDERING INFORMATION**

ORDER CODE	PACK QTY.	UPC	EASY CODE
KT-LED40T8HO-96GC-840-D2	10	843654140094	DPI-80
KT-LED40T8HO-96GC-850-D2	10	843654140100	KWB-88
KT-LED40T8HO-96GC-865-D2	10	843654140117	NQI-80

**CATALOG NUMBER BREAKDOWN**

# KT-LED40T8HO-96G-8XX-D2

- 1
- 2
- 3
- 4
- 5
- 6
- 7
- 8
- 9
- 10

- 1** Keystone Technologies
- 2** LED Lamp
- 3** Wattage
- 4** Lamp Type
- 5** High Output
- 6** Nominal Length (Inches)
- 7** Glass
- 8** 80 CRI
- 9** Color Temperature
- 10** Double Drive Series