

ROUND LED LIGHT ENGINES INSTALLATION

CAT. NO. KT-RKIT8AC-3C-8xx-FDIM | KT-RKIT12AC-4C-8xx-FDIM | KT-RKIT16AC-5C-8xx-FDIM
 KT-RKIT19AC-7C-8xx-FDIM | KT-RKIT25AC-7C-8xx-FDIM

WARNING: Risk of fire or electric shock. LED Retrofit Kit installation requires knowledge of luminaires electrical systems. If not qualified, do not attempt installation. Contact a qualified electrician.

AVERTISSEMENT - Risque d'incendie ou de choc électrique. L'installation du kit de mise à niveau LED nécessite une connaissance des systèmes électriques des luminaires. S'il n'est pas qualifié, ne pas tenter l'installation. Contactez un électricien qualifié.

WARNING: Risk of fire or electric shock. Install this kit only in luminaires that have the construction features and dimensions shown in the photographs and/or drawings and where the input rating of the retrofit kit does not exceed the input rating of the luminaire.

AVERTISSEMENT - Risque d'incendie ou de choc électrique. N'installez ce kit que dans les luminaires dont les caractéristiques de construction et les dimensions indiquées sur les photographies et/ou les dessins et où la puissance d'entrée du kit de modernisation ne dépasse pas la puissance d'entrée du luminaire.

Only those open holes indicated in the photographs and/or drawings may be made or altered as a result of kit installation. Do not leave any other open holes in an enclosure of wiring or electrical components.

WARNING: To prevent wiring damage or abrasion, do not expose wiring to edges of sheet metal or other sharp objects.

AVERTISSEMENT - Pour éviter d'endommager le câblage ou de l'abrasion, ne pas exposer le câblage à des bords de tôle ou d'autres objets tranchants.

THIS RETROFIT KIT IS ACCEPTED AS A COMPONENT OF A LUMINAIRE WHERE THE SUITABILITY OF THE COMBINATION SHALL BE DETERMINED BY AUTHORITIES HAVING JURISDICTION.

"THIS LUMINAIRE HAS BEEN MODIFIED TO OPERATE LED LAMPS. DO NOT ATTEMPT TO INSTALL OR OPERATE FLUORESCENT LAMPS IN THIS LUMINAIRE," Shall be marked on the retrofit luminaire where readily visible by the user during normal maintenance including relamping. Affix the field applied label onto the luminaire.

MODEL NUMBER	PARTS/COMPONENTS INCLUDED IN KIT	TARGET-LUMINAIRE		
		APPLICATIONS	TYPE	LAMP-HOLDER
KT-RKIT8AC-3C-8xx-FDIM KT-RKIT12AC-4C-8xx-FDIM KT-RKIT16AC-5C-8xx-FDIM KT-RKIT19AC-7C-8xx-FDIM KT-RKIT25AC-7C-8xx-FDIM	Mounting Accessories Instruction Sheet LED Module Luminaire Marking Labels	Permanently Connected Luminaires Fluorescent Luminaires Surface Mounted	Closed type (Diffuser or Lens/Cover)	N/A

The units are intended to retrofit surface mount, with or without a diffuser, luminaires with the following minimum dimensions, as shown below.

LUMINAIRE OVERALL DIMENSIONS (in)	MODEL	3"	4"	5.5"	7"
	# Pieces	1	1	1	1
	Inside Diameter (in)	4.33	8.38	8.38	9.17
	Inside Height (in)	.90	1.1	1.1	3.54

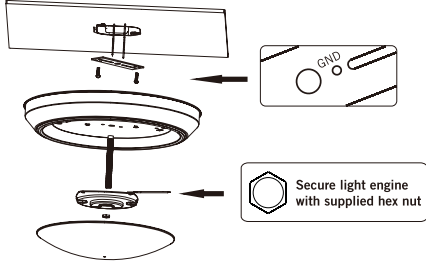
Included Components:

MODEL	INCLUDED COMPONENTS	QUANTITY
4", 5.5", 7"	50mm threaded tube	1
4", 5.5", 7"	Crossbar (Bracket)	1
3", 4", 5.5", 7"	ST4X50mm machine screw	2
3", 4", 5.5", 7"	3x16mm self-tapping screw	4
4", 5.5", 7"	10mm hex nut	1

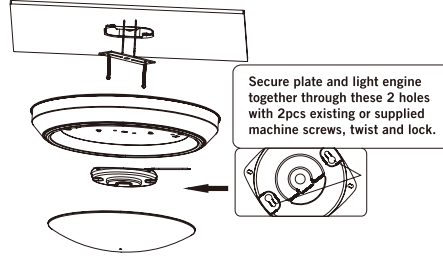
INSTALLATION STEPS:

1. Shut off power to light fixture at the breaker.
2. Remove diffuser from the fixture and disconnect the AC cables.
3. Disconnect fixture mains wiring from junction box mains wires.
4. Remove bulb socket(s), fixture wire, bulb brackets, and fluorescent ballast (if applicable) from fixture.
5. Route LED retrofit wire harness wires (1 white, 1 black) and ground wire (1 green) through wire opening in fixture. Confirm wires will not be pinched by round LED mounting plate or other fixture hardware when re-assembled.
6. Three installation proposals for the retrofitting:

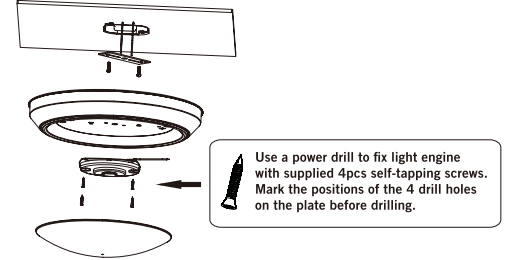
A - Dome Installation



B - Junction Box Installation



C - Surface Mounting



7. Connect wire harness leads to mains wiring inside junction box using 3 wire nuts/connector (wago):
 - a) Green wire to ground wire (Bare or Green)
 - b) Black or blue wire to line conductor (Black)
 - c) White wire to neutral conductor (White)
8. Place the provided label in the outer space of the luminaire after the LED engine installation has been completed. Label must be visible.

WARNING: This luminaire has been modified to operate LED lamps. Do not attempt to install or operate fluorescent lamps in this luminaire.

For replacement options contact **Keystone Technologies:**
800.464.2680 • www.keystonetech.com

9. Optional: Re-attach and secure the lens to luminaire.