



# KTLD-15-UV-PS350-42-VDIM-LP1

## CONSTANT CURRENT LED DRIVER



**10 YEAR LIMITED WARRANTY**

### DESCRIPTION

LED Driver | 15W | 120-277V Input | 260, 290, 320 or 350mA Output

<b>TOTAL POWER:</b> 15W
<b>INPUT VOLTAGE:</b> 120~277Vac ± 10%
<b>INPUT FREQUENCY:</b> 50/60 Hz
<b>OUTPUT CURRENT:</b> 260, 290, 320 or 350mA
<b>DIMMING:</b> 0-10V
<b>WARRANTY:</b> 10 Year Limited



### ELECTRICAL SPECIFICATIONS

<b>Input Voltage Range</b>	120~277Vac ± 10%
<b>Frequency</b>	50/60 Hz
<b>Power Factor</b>	> 0.9 under 120~277Vac input with 80~100% load condition (For All Output Currents)
<b>Inrush Current</b>	30A @120V
<b>Max. Input Current</b>	0.16A @120V, 0.09A @240V, 0.08A @277V
<b>THD</b>	< 20% under 120~277Vac input with 80~100% load condition (For All Output Currents)
<b>Load Regulation</b>	± 2%
<b>Line Regulation</b>	± 2%
<b>Output Tolerance</b>	± 5% at Full Load Condition
<b>Turn-On Delay Time</b>	< 0.5s at Full Load Condition
<b>Overshoot</b>	< 10% at Full Load Condition
<b>No Load Power Consumption</b>	< 1W
<b>Ripple &amp; Noise (pk-pk)</b>	< 10%
<b>Withstand Voltage</b>	Input to output, 2,800Vdc, 2mA
<b>Leakage Current</b>	Maximum 0.5mA at 277Vac, 60Hz input
<b>Minimum Dim %</b>	~10% Dimming
<b>Protection</b>	<ul style="list-style-type: none"> <li>• <b>Over Voltage Protection:</b> Hiccup mode. Protection will trigger when load voltage exceeds specified output voltage and will auto recover after the fault mode is removed.</li> <li>• <b>Over Current Protection:</b> Hiccup mode. Protection will trigger when load current exceeds specified output current and will auto recover after the fault mode is removed.</li> <li>• <b>Short Circuit Protection:</b> Hiccup mode. Protection will trigger when short circuited and will auto recover after the fault mode is removed.</li> </ul>

### PRODUCT SPECIFICATIONS

Catalog Number	Output Current	Output Voltage	Output Power	OCV	Typical Efficiency at 120V	Typical Efficiency at 240V	Typical Efficiency at 277V	Remote Mounting Distance (#18 AWG)	Class 2	
									US	Canada
KTLD-15-UV-PS350-42-VDIM-LP1	260mA	20-42V	10.9W	47V	84%	84%	84%	106 ft	✓	✓
	290mA	20-42V	12.2W							
	320mA	20-42V	13.4W							
	350mA	20-42V	14.7W							

### ENVIRONMENTAL SPECIFICATIONS

<b>Operating Temperature</b>	-40°C/-40°F to 60°C/140°F
<b>Storage Temperature</b>	-40°C/-40°F to 85°C/185°F
<b>Humidity</b>	5% to 95%
<b>MTBF</b>	365,000 hours at 40°C/104°F ambient (~70°C/158°F Case temp)
<b>Life Rating</b>	85,000 hours at 120Vac input, 100% load and 60°C/140°F case temperature
<b>Maximum Case Temperature</b>	90°/194°F
<b>Maximum Case Temperature (tc) for 5-Year Warranty</b>	75°C/167°F

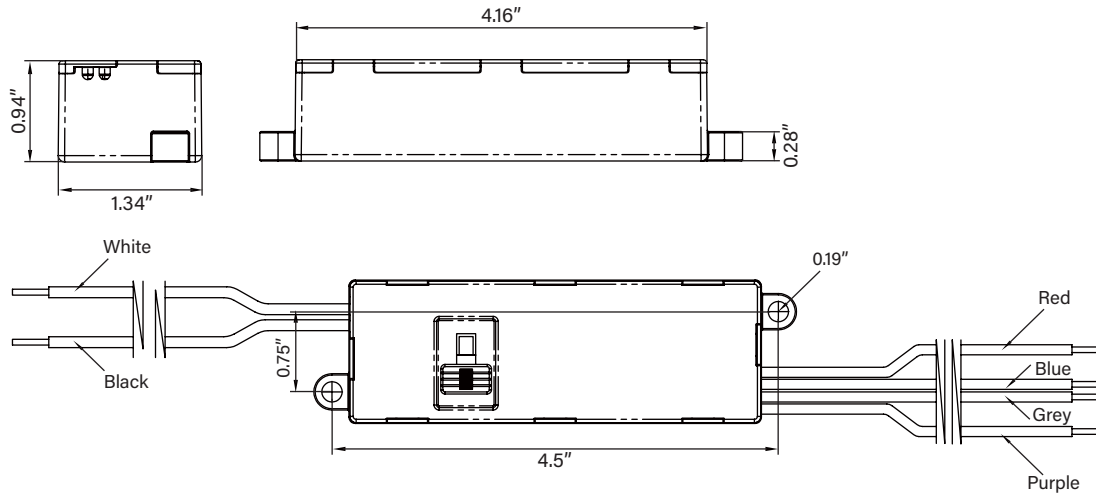
### SAFETY AND EMC COMPLIANCE

<b>UL/cUL</b>	UL 8750, Class P, UL1310 Class 2
<b>CE</b>	EN61347-1, EN61347-2-13
<b>FCC, 47CFR Part 15</b>	ANSI C63.4:2009 Class B (Consumer Limit)
<b>EN61000-3-2</b>	Harmonic Current Emissions Class C
<b>Sound Rating</b>	Class A Sound Rating (per Energy Star V1.0)

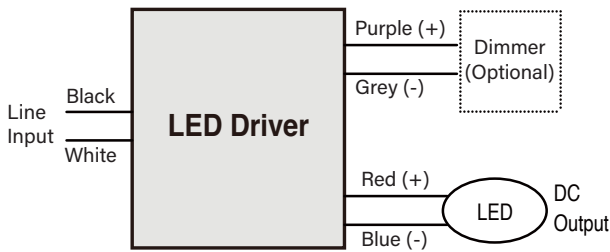
# KTLD-15-UV-PS350-42-VDIM-LP1

## CONSTANT CURRENT LED DRIVER

### PHYSICAL SPECIFICATIONS



### WIRING DIAGRAM

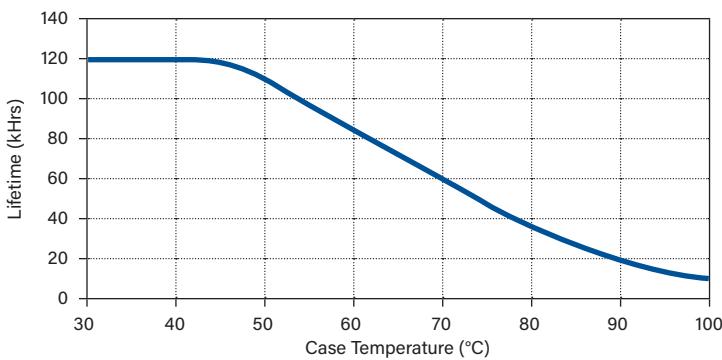


### WIRING SPECIFICATIONS

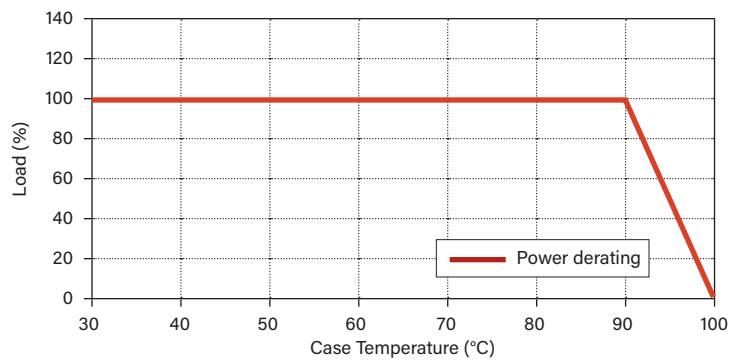
<b>INPUT</b>	12", UL 1569 #18AWG (Black and White)
<b>OUTPUT</b>	12", UL 1569 #18AWG (Red and Blue)
<b>DIMMING</b>	12", UL 1569 #18AWG (Purple and Grey)

### PERFORMANCE SPECIFICATIONS

#### LIFETIME VS CASE TEMPERATURE



#### POWER DERATING VS CASE TEMPERATURE

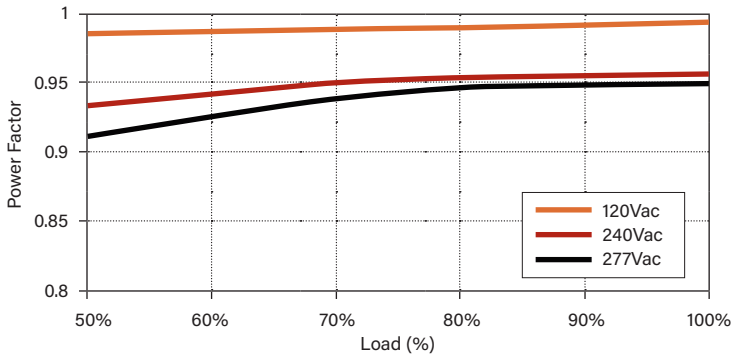




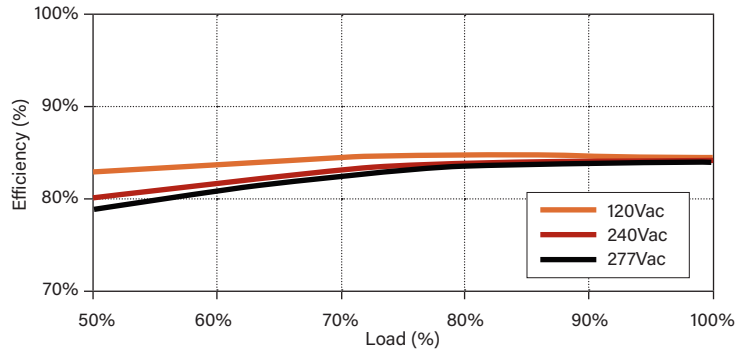
# KTLD-15-UV-PS350-42-VDIM-LP1

## CONSTANT CURRENT LED DRIVER

**POWER FACTOR VS LOAD**



**EFFICIENCY VS LOAD**



**ORDERING INFORMATION**

ORDER CODE	PACKAGING STYLE	PACK QTY.	ITEM STATUS
KTLD-15-UV-PS350-42-VDIM-LP1	Carton Pack	40	Quick Ship

**CATALOG NUMBER BREAKDOWN**

# KTLD-15-UV-PS350-42-VDIM-LP1

- 1
- 2
- 3
- 4
- 5
- 6
- 7
- 8

- 1** Keystone Technologies LED Driver
- 2** Max. Output Wattage
- 3** 120-277V Input
- 4** Power Select Series
- 5** Max. Output Current
- 6** Max. Output Voltage
- 7** 0-10V Dimming
- 8** Case Style