

SINCE 1945
KEYSTONE
LIGHT MADE EASY®

Poles and Accessories

SEPTEMBER 2024

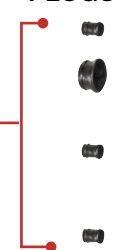
The Perfect Pedestal

PRE-DRILLED HOLE PATTERN/PLUGS

Pre-drilled hole pattern on all sides for flexible luminaire attachment (accommodates 2"-3" on-center hole patterns)

Plugs are provided to seal unused drill holes

PLUGS



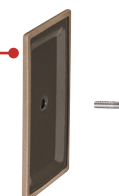
POLYESTER POWDER COAT FINISH

Poles come in standard bronze, and we offer custom finishes in a full range of colors

HAND HOLE COVER

Equipped with hand hole cover for constant security and protection

HAND HOLE COVER



RUGGED CONSTRUCTION

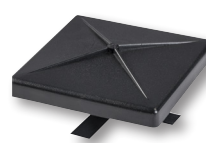
High-grade steel that exceeds ASTM A500 Grade C with minimum yield strength of 50,000 PSI

Base plates constructed of high-strength ASTM A36 steel with 36,000 PSI minimum yield strength

Included accessories:



BASE PLATE COVER



POLE CAP



HAND HOLE COVER



ANCHOR BOLTS

A wide variety of mounting options

We have mount adapters for a variety of applications in both square and round pole styles, including side and top mounts; single, dual, triple, and quad tenons; and multiple bullhorns.



LEARN MORE



Fixtures for all applications

Light your outdoor environment with Keystone fixtures. Our products offer rugged construction, versatile features and accessories, reliable performance, and simple maintenance.

Area Lights with optic_{swap}



- Tool-free changeable lenses means one fixture can handle any space on a lot
- Stocking special includes fixture, lenses, mount, photocell, shorting cap in one box
- Keystone LED driver ensures compatibility and performance

LEARN MORE



Floodlights with optic_{swap}



- Everything in the box, including fixture, 3 optic lenses, sensor, 2 mounts
- With tool-free changeable lenses, one fixture can handle many spaces
- Guaranteed performance with driver and fixture from same manufacturer

LEARN MORE



Keystone poles are the ideal support for Keystone floodlights and area lights, with a pre-drilled pattern on all four sides designed to accommodate Keystone heads. They're available in 15', 20', 25', and 30' lengths and can be shipped in about 2 weeks. The pole cap, base plate cover, and hand hole cover are included, and all pricing includes freight.

We also offer custom finishes, heights, and pole shapes upon request.

LIGHT MADE EASY

Poles

CATALOG NUMBER	DESCRIPTION
KT-SP-4SQ-15-11G-UNV	4 in square steel pole, 15 ft, 11 GA, universal drill pattern on all 4 sides. Includes pole, pole cap, base plate cover, handhold cover, and plugs for the universal drill pattern
KT-SP-4SQ-20-11G-UNV	4 in square steel pole, 20 ft, 11 GA, universal drill pattern on all 4 sides. Includes pole, pole cap, base plate cover, handhold cover, and plugs for the universal drill pattern
KT-SP-4SQ-25-11G-UNV	4 in square steel pole, 25 ft, 11 GA, universal drill pattern on all 4 sides. Includes pole, pole cap, base plate cover, handhold cover, and plugs for the universal drill pattern
KT-SP-5SQ-30-7G-UNV	5 in square steel pole, 30 ft, 7 GA, universal drill pattern on all 4 sides. Includes pole, pole cap, base plate cover, handhold cover, and plugs for the universal drill pattern

Anchor Bolt Kits

CATALOG NUMBER	DESCRIPTION
KT-ABOLT-4SQ-K1	Anchor bolt kit for 4" square poles. (4) 3/4 in x 30 in bolts and hardware. Includes template
KT-ABOLT-5SQ-K1	Anchor bolt kit for 5" square poles. (4) 1 in x 36 in Bolts and hardware. Includes template

Wall Mount Tenon Adapters FOR SLIPFITTER FIXTURE MOUNT

CATALOG NUMBER	DESCRIPTION
KT-WMT-S	Wall mount single 2 3/8" tenon, bronze housing
KT-WMT-S90	Wall mount single 2 3/8" tenon, 90°, bronze housing

Pole Mount Side Tenon Adapters FOR SLIPFITTER FIXTURE MOUNT

CATALOG NUMBER	DESCRIPTION
KT-PMST-SQ-S	Pole mount single 2 3/8" tenon, side mount for square pole, bronze housing
KT-PMST-R-S	Pole mount single 2 3/8" tenon, side mount for round pole, bronze housing

Pole Mount Top Tenon Adapters FOR SLIPFITTER FIXTURE MOUNT

CATALOG NUMBER	DESCRIPTION
KT-PMTT-4R-SV	Pole mount single 2 3/8" tenon, top mount vertical for 4" round pole, bronze housing
KT-PMTT-4SQ-SV	Pole mount single 2 3/8" tenon, top mount vertical for 4" square pole, bronze housing
KT-PMTT-5SQ-SV	Pole mount single 2 3/8" tenon, top mount vertical for 5" square pole, bronze housing
KT-PMTT-4SQ-S90	Pole mount single 2 3/8" tenon, top mount horizontal 90° for 4" square pole, bronze housing

Pole Mount Top Tenon Adapters FOR SLIPFITTER FIXTURE MOUNT

CATALOG NUMBER	DESCRIPTION
KT-PMTT-4SQ-D180	Pole mount dual 2 3/8" tenon, top mount horizontal 180° for 4" square pole, bronze housing
KT-PMTT-4SQ-D90	Pole mount dual 2 3/8" tenon, top mount horizontal 90° for 4" square pole, bronze housing
KT-PMTT-4SQ-T90	Pole mount triple 2 3/8" tenon, top mount horizontal 90° for 4" square pole, bronze housing
KT-PMTT-4SQ-Q90	Pole mount quad 2 3/8" tenon, top mount horizontal 90° for 4" square pole, bronze housing

Bullhorn Adapters FOR SLIPFITTER FIXTURE MOUNT

CATALOG NUMBER	DESCRIPTION
KT-BH-SF-D180	Dual bullhorn, in-line 180°, slips over 2 3/8" tenon
KT-BH-SF-T180	Triple bullhorn, in-line 180°, slips over 2 3/8" tenon
KT-BH-SF-T120	Triple bullhorn, 120°, slips over 2 3/8" tenon
KT-BH-SF-Q180	Quad bullhorn, in-line 180°, slips over 2 3/8" tenon
KT-BH-SF-Q90	Quad bullhorn, 90°, slips over 2 3/8" tenon

LIT-SS-POLES