



## SMALL 20W NON-CUTOFF LED WALL PACK

### INSTALLATION INSTRUCTIONS

**PLEASE FIND A QUALIFIED ELECTRICIAN FOR INSTALLATION. Please read the instructions before you install and use the luminaire.**

#### APPLICATION

Building mount for exterior illumination needs (including entryway, pathway, stairwell, security, and other general site lighting requirements)

#### SAFETY AND ELECTRICAL PARAMETERS

##### Warning

- To reduce the risk of death, personal injury, or property damage from fire, electric shock, falling parts, cuts/abrasions, and other hazards, read all warnings and instructions included with and/or on the fixture box and fixture labels.
- Before installing, servicing, or performing routine maintenance upon this equipment, follow these general precautions.
- Commercial installation, service, and maintenance of luminaires should be performed by a qualified licensed electrician.
- If you are unsure about the installation or maintenance of the luminaires, consult a qualified licensed electrician. Please abide by all relevant country, regional, and local code requirements and regulations when installing this luminaire. Wiring must be in accordance with NEC and all applicable local codes.
- Do not make or alter any holes unnecessarily in an enclosure of wiring or electrical components during the installation. Additional holes in the housing are permitted only for mounting hardware and must be properly sealed with silicone (not provided) in order to maintain watertight operation of the fixture.

**Caution:** Before installing, make certain that AC power to the fixture is off.

**Caution:** The electrical rating of this product is 120–277V. Installer must confirm that there is 120–277V at the fixture before installation.

##### Warning

- Turn off electrical power at the fuse or circuit breaker box before wiring fixture to the building power.
- Turn off the electrical power when you perform any maintenance.
- Verify that supply voltage is correct by comparing it with the luminaire label information. Do not install with supply voltage that exceeds the rated input voltage of the luminaire.
- All wiring connections should be capped with UL approved wire connectors.

##### Caution

- Avoid direct eye exposure to the light source while it is on.
- Account for small parts and destroy or recycle packaging material, as these may be hazardous to children.
- Risk of burn. Disconnect power and allow fixture to cool before handling / servicing.

##### Notice

- All fixture installs must be properly grounded.
- Minimum of 75°C supply conductors.
- Specifications and dimensions subject to change without notice. Consult Keystone with any questions or concerns.
- Fixture is IP65 rated and is suitable for wet locations.
- Ensure ambient operating temperature between –40°C/–40°F to 50°C/122°F is maintained. Exceeding these temperature ranges will void warranty and may reduce lifetime or cause performance issues.
- Inspect fixture for any damages before installing. If there is any damage, please do not install and contact Keystone or authorized distributor for resolution.
- Fixture should not be recessed. Housing must be mounted with lens facing towards the ground.

## PRODUCT SPECIFICATIONS

### EMERGENCY BACKUP

Catalog Number	Wattage	Lumens	Lumens Below 90°	Selectable CCT	Efficacy	Input Voltage	Dimming	CRI	Housing Color	Photocell	Rated Life	Legacy Equivalent
KT-WPLED20-S1-8CSB-VDIM /EM4	20W	2600 lm	2340 lm	3000K	130 lm/W	120-277V	0-10V	>80	Bronze	Included	50,000 hrs	50-70W MH
		2700 lm	2430 lm	4000K	135 lm/W							
		2500 lm	2250 lm	5000K	125 lm/W							

### COLOR SELECT

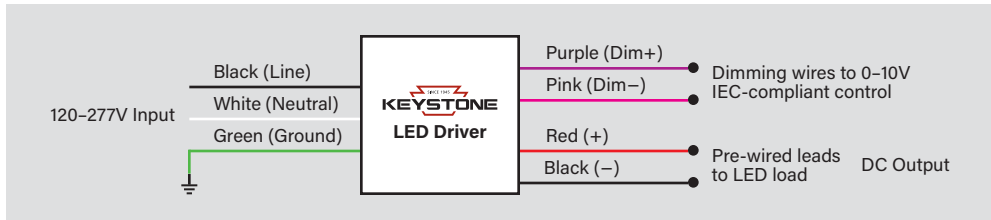
Catalog Number	Wattage	Lumens	Lumens Below 90°	Selectable CCT	Efficacy	Input Voltage	Dimming	CRI	Housing Color	Photocell	Rated Life	Legacy Equivalent
KT-WPLED20-S1-8CSB-VDIM	20W	2600 lm	2340 lm	3000K	130 lm/W	120-277V	0-10V	>80	Bronze	Included	50,000 hrs	50-70W MH
		2700 lm	2430 lm	4000K	135 lm/W							
		2500 lm	2250 lm	5000K	125 lm/W							
KT-WPLED20-S1-8CSB-VDIM-B	20W	2600 lm	2340 lm	3000K	130 lm/W	120-277V	0-10V	>80	Black	Included	50,000 hrs	50-70W MH
		2700 lm	2430 lm	4000K	135 lm/W							
		2500 lm	2250 lm	5000K	125 lm/W							
KT-WPLED20-S1-8CSB-VDIM-W	20W	2600 lm	2340 lm	3000K	130 lm/W	120-277V	0-10V	>80	White	Included	50,000 hrs	50-70W MH
		2700 lm	2430 lm	4000K	135 lm/W							
		2500 lm	2250 lm	5000K	125 lm/W							

### STANDARD

Catalog Number	Wattage	Lumens	Lumens Below 90°	Selectable CCT	Efficacy	Input Voltage	Dimming	CRI	Housing Color	Photocell	Rated Life	Legacy Equivalent
KT-WPLED20-S1-840-VDIM	20W	2500 lm	2250 lm	4000K	125 lm/W	120-277V	0-10V	>80	Bronze	Included	50,000 hrs	50-70W MH
KT-WPLED20-S1-850-VDIM		2500 lm	2250 lm	5000K	130 lm/W							

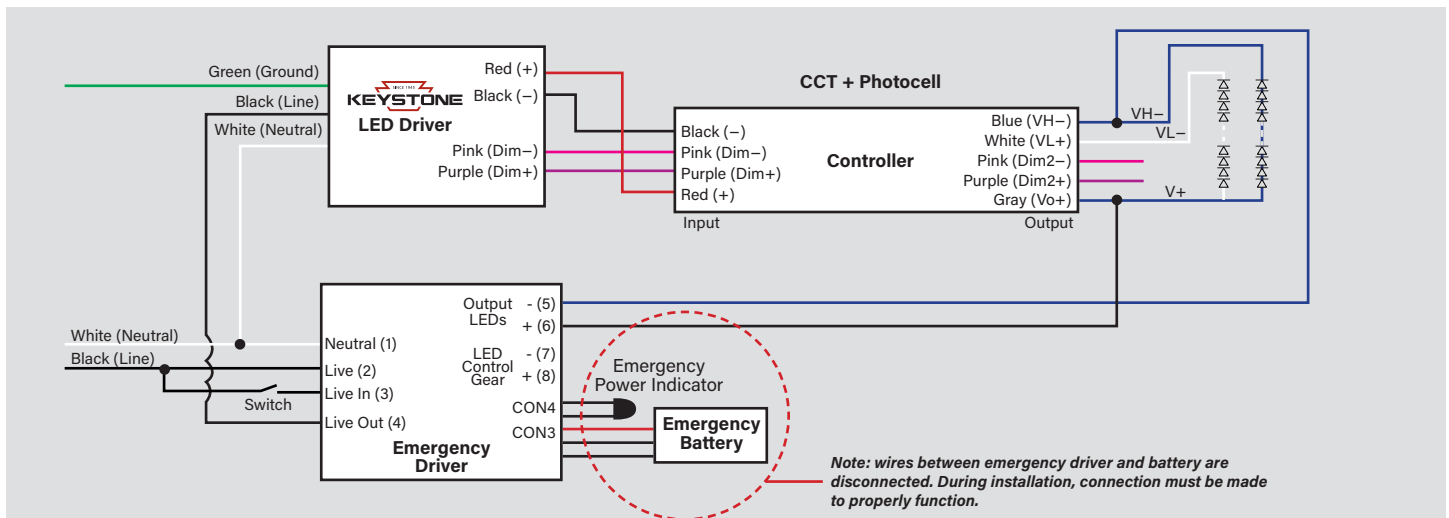
## GENERAL SETUP INSTRUCTIONS

### GENERAL WIRING DIAGRAM



Note: \*In accordance with NEC-20 410.69 2022, all 0-10V negative wires have been updated from gray to pink. Please contact Keystone for details

### EM UNIT WIRING DIAGRAM



## GENERAL SETUP INSTRUCTIONS (CONTINUED)

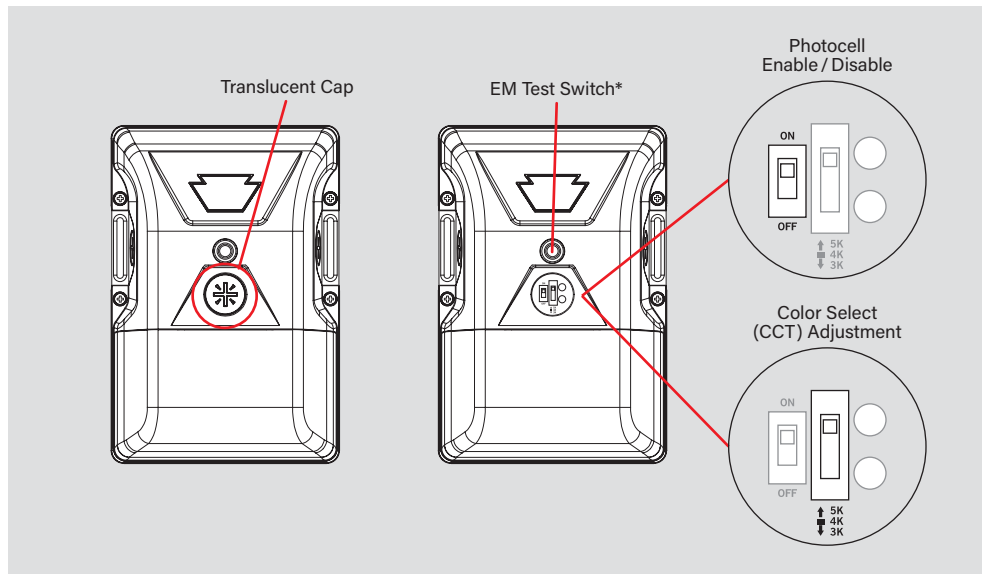
### PHOTOCELL ENABLE / DISABLE

This fixture is equipped with a dusk-to-dawn photocell behind the translucent knock-out (KO) cover. Adjust the dip switch to enable (ON) or disable (OFF) the photocell function (see illustrations to the right). Fixture comes preset with photocell enabled unless otherwise noted.

### COLOR SELECT (CCT) ADJUSTMENT

Certain fixture models are equipped with Color Select technology. There is an adjustable dip switch behind the translucent knock-out (KO) cover to change CCT between 5000K, 4000K, and 3000K (see illustrations to the right). Fixture comes preset at 5000K unless otherwise noted.

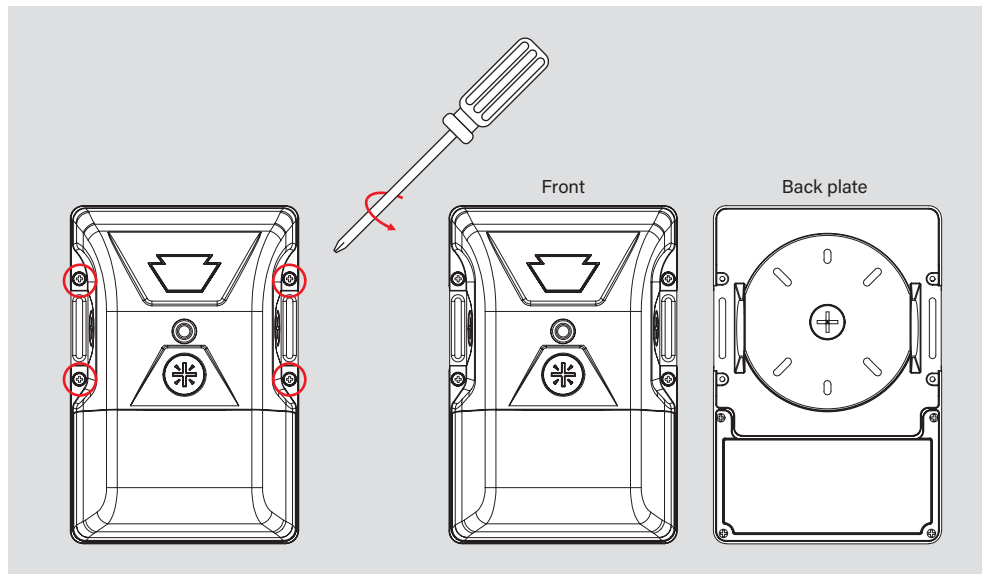
**Note:** not all models are equipped with this feature.



\*EM test switch only included on KT-WPLED20-S1-8CSB-VDIM /EM4

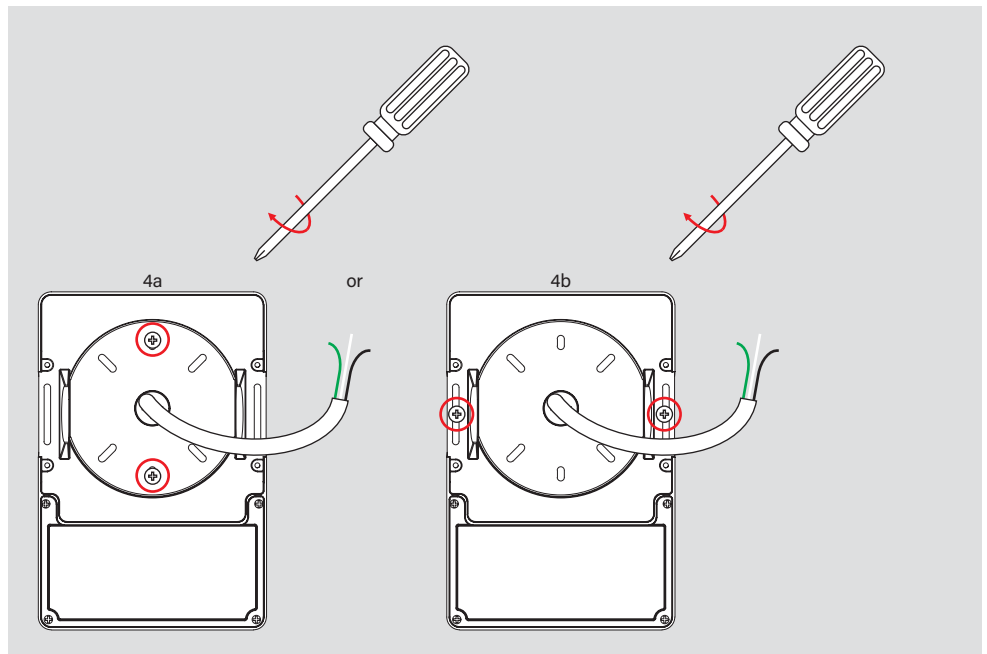
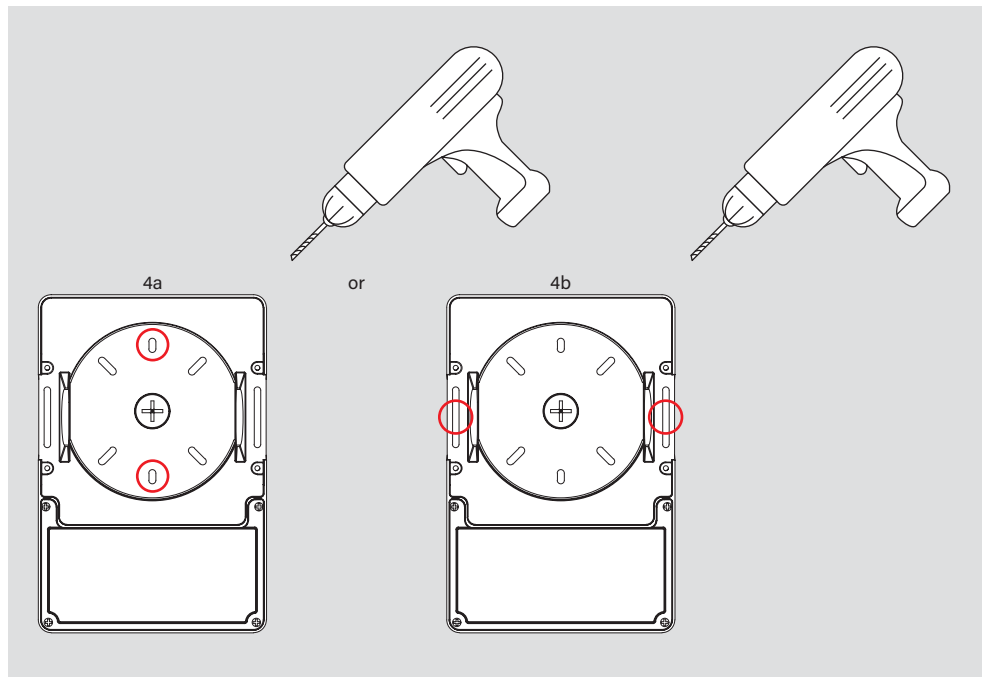
## INSTALLATION INSTRUCTIONS

1. Ensure that power is off before beginning installation.
2. Open fixture by loosening 4 screws. Remove back plate of fixture (see illustrations to the right).
3. Based on location of input power feed, remove one 1/2" threaded plug from back plate with screwdriver. Note: threaded plugs are located either in the center of the junction box drilling template or on either



## INSTALLATION INSTRUCTIONS

4. a. Using the junction box drilling template on back of housing as a reference, drill out the appropriate holes that align with junction box accommodations on site. The drilling template matches most standard junction box varieties.
  - b. Use the oval holes on side of housing for screw-type mounting on either side of the back plate based on suitable structural accommodations on site. Keystone recommends a minimum of (2) screws for proper security. Mark and drill appropriate holes in the building wall's screw-mounting as needed. (see illustrations to the right).
5. Adhere EVA foam pad on the outside of fixture housing, where drilling template mates with junction box / building exterior.
6. Thread input power wiring through chosen 1/2" KO hole on back plate of housing. Ensure that any exposed conduit entry to fixture is watertight by using Teflon tape or silicone sealant.



*(Installation Instructions continued on next page)*

**INSTALLATION INSTRUCTIONS (continued)**

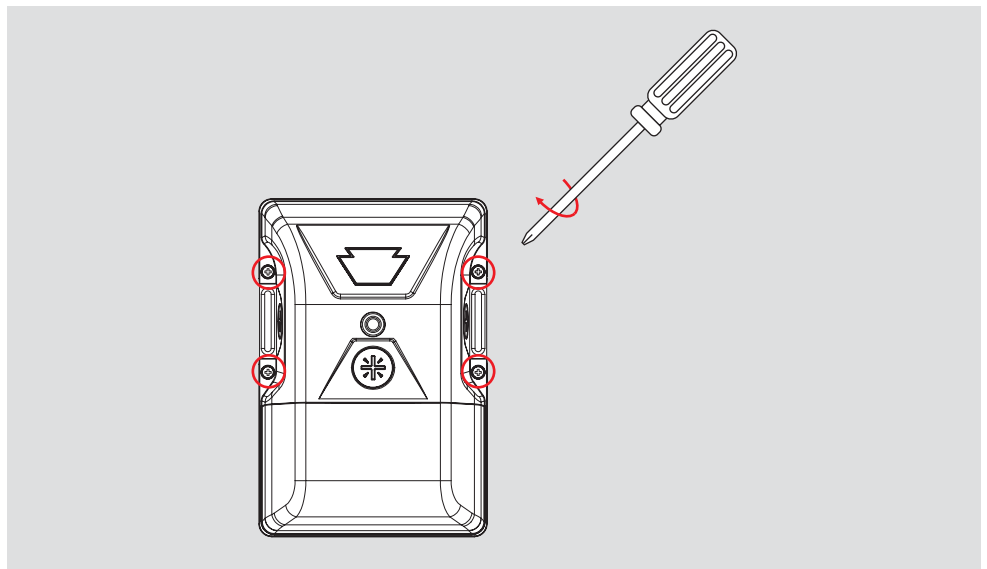
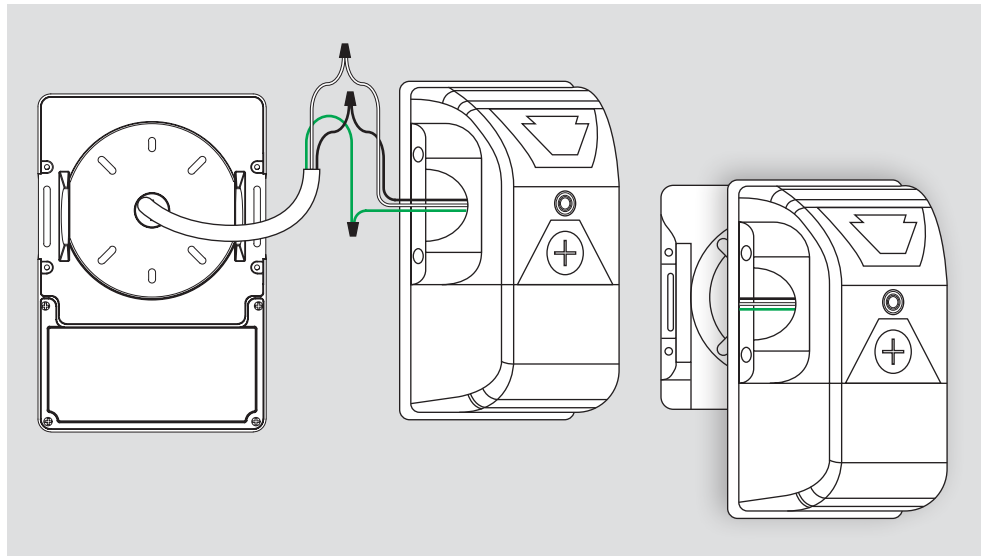
7. Secure fixture to the building or junction box with suitable screws / hardware for the application, as per steps 4a and 4b options on page 2. Be sure EVA foam on back side of fixture is compressed and silicone sealant is added on top of drill / screw locations to maintain watertight operation (see illustrations to the right).

8. Complete wiring to input power wires (see **General Wiring Diagram** on page 2 and see illustrations to the right) and re-install the front of the fixture housing.

*Note: wires between emergency driver and battery are disconnected. During installation, connection must be made to properly function.*

9. Secure front of fixture housing to the back plate using (4) screws. Be sure fixture gasket is seated properly and fully compressed (see illustration to the right).

10. Confirm that fixture is securely mounted to building exterior and then restore power to the fixture.



**SAVE THESE INSTRUCTIONS**