



KT-LED100HID-ADJ-EX39-8XX-D

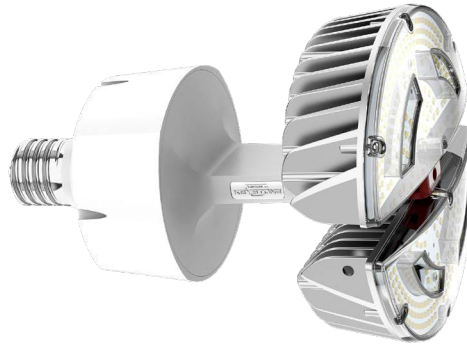
MULTI-ANGLE ADJUSTABLE LAMP

DESCRIPTION

Multi-Angle Adjustable Lamp | Smart Port Sensor Compatible

APPLICATION

Used for low bay/high bay, post top, and shoebox applications



PRODUCT FEATURES

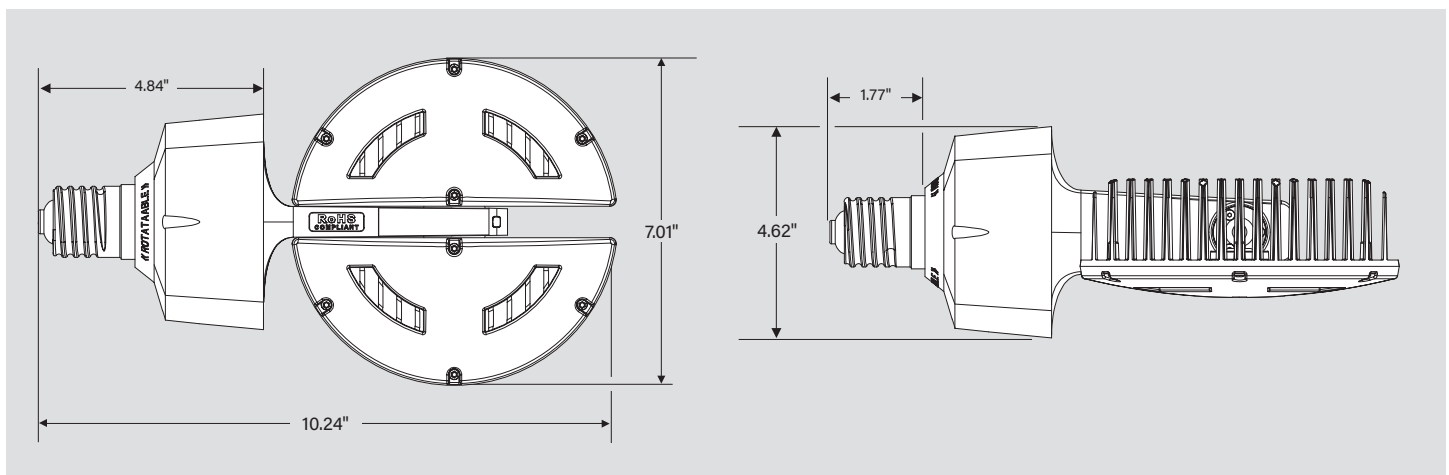
- Replacement for 400W metal halide lamp
- 50,000+ hour lifetime
- Environmentally friendly: No mercury used
- Instant startup
- UL Listed
- Operating Temperature: -30°C/-22°F to 45°C/113°F
- Integral driver, eliminates the need for external driver or ballast; includes 4kV surge protection
- Suitable for use in enclosed fixtures
- Do not use with standard dimmers. Not compatible with phase dimmers. Dimming functions with sensors only

PERFORMANCE SPECIFICATIONS

Catalog Number	Input Voltage	Wattage	Legacy Equivalent Wattage	Color Temperature	Lumen Output*	CRI	Power Factor	Efficacy
KT-LED100HID-ADJ-EX39-840-D	120-277V	100W	400W Metal Halide	4000K	13,400 lm	≥ 80.0	≥ 0.9	134 lm/W
KT-LED100HID-ADJ-EX39-850-D	120-277V	100W	400W Metal Halide	5000K	14,000 lm	≥ 80.0	≥ 0.9	140 lm/W

* Based off of total lamp lumens

PHYSICAL SPECIFICATIONS





KT-LED100HID-ADJ-EX39-8XX-D

MULTI-ANGLE ADJUSTABLE LAMP

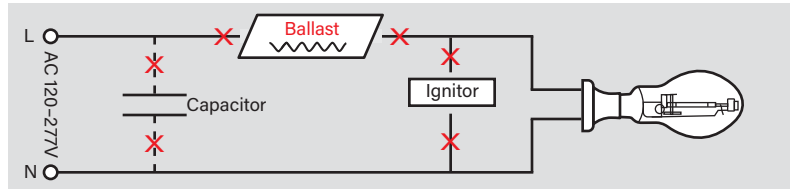
WIRING INSTRUCTIONS

STEP 1

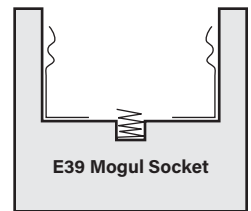
Turn off the power before installation.

STEP 2

Remove the old ballast, capacitor, and igniter, if applicable.

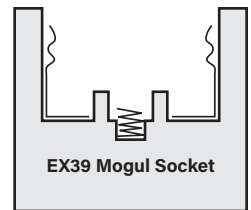
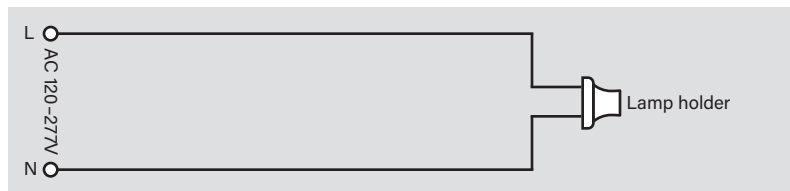


EX39-based lamps will work in *both* **E39** and **EX39** sockets.



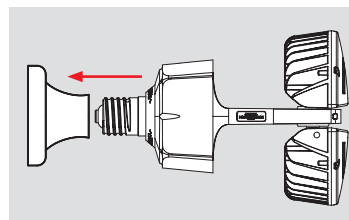
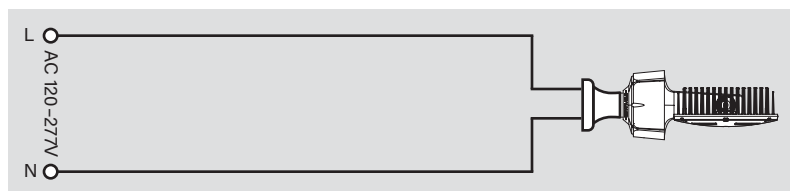
STEP 3

Make sure AC wires connect to EX39 socket directly.



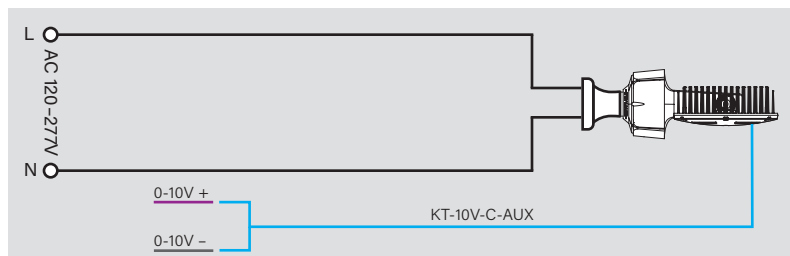
STEP 4

Screw the LED lamp into the corresponding socket.



STEP 5 (OPTIONAL)

Connect 0-10V dimming signal to the lamp via the smartport receptacle on the top of the lamp and with the wiring accessory KT-10V-C-AUX (sold separately.)



STEP 6

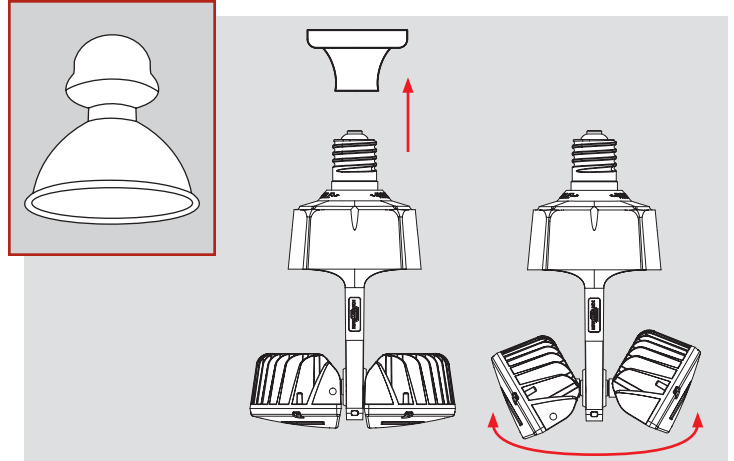
Turn on power to confirm lamp is operating as intended.

KT-LED100HID-ADJ-EX39-8XX-D

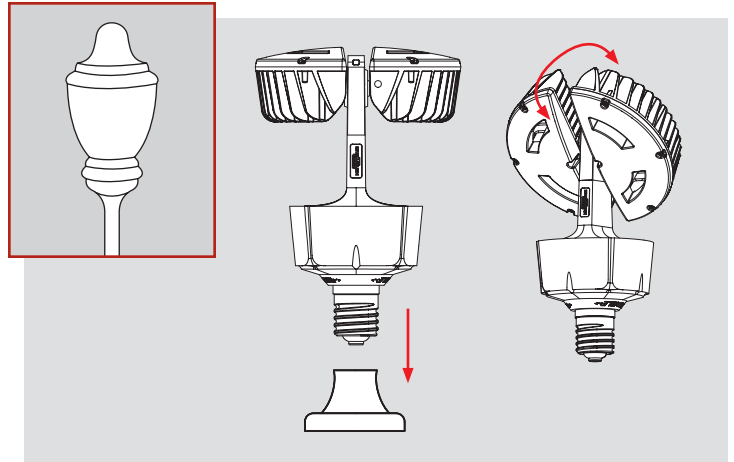
MULTI-ANGLE ADJUSTABLE LAMP

APPLICATIONS

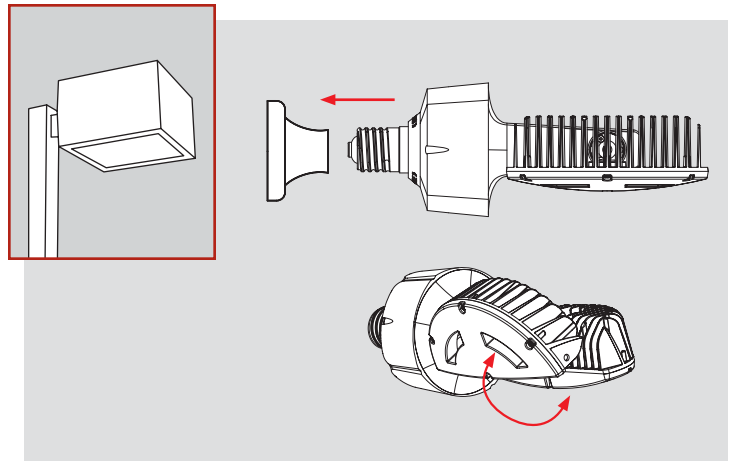
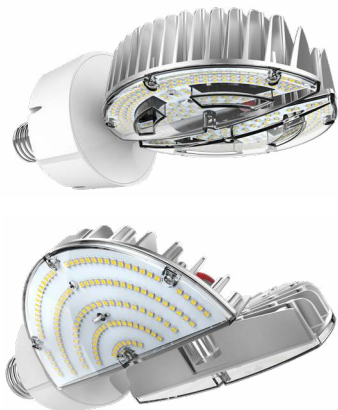
LOW BAY/HIGH BAY



POST TOP



SHOEBOX





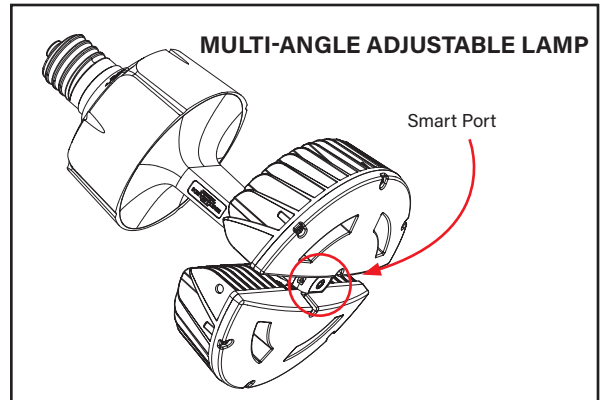
KT-LED100HID-ADJ-EX39-8XX-D

MULTI-ANGLE ADJUSTABLE LAMP

ADAPTER



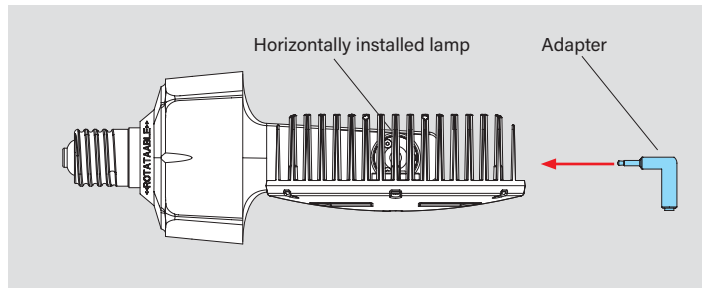
Adapter included with Multi-Angle Adjustable Lamp.
For use with Smart Port LED Sensors when lamp is installed in a horizontal application.



Installation Instructions

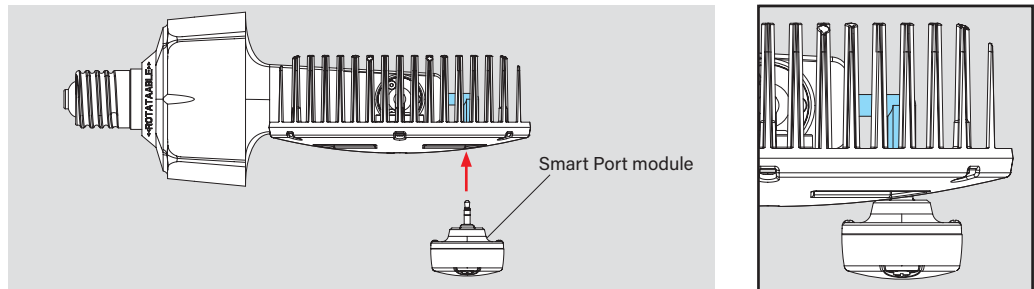
STEP 1

Insert adapter into Smart Port.



STEP 2

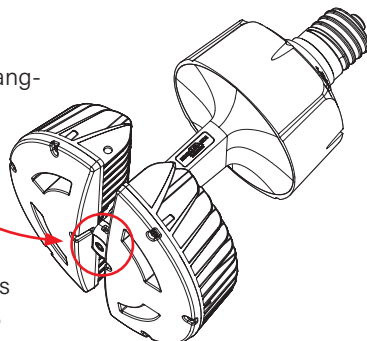
Insert Smart Port module into adapter.



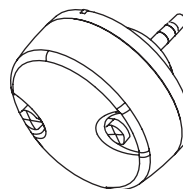
SMART PORT LED

Operate as a standard lamp or insert interchangeable modules into the Smart Port to enhance lamp functionality.

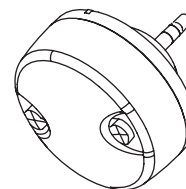
Note: When using Smart Port, refer to installation instructions included with sensors.



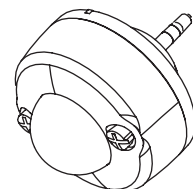
PHOTOCELL



MICROWAVE



PIR

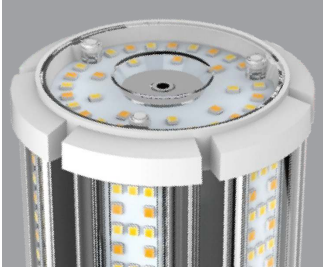




KT-LED100HID-ADJ-EX39-8XX-D

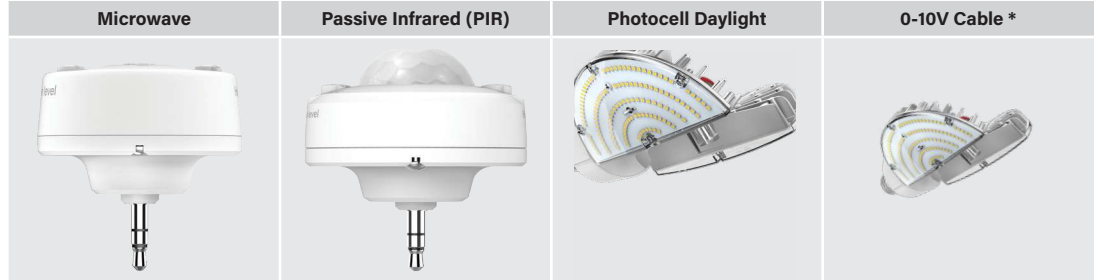
MULTI-ANGLE ADJUSTABLE LAMP

SMART PORT LED



On the top of the lamp is a low-voltage AUX port for lamp level sensor controls.

SMART PORT LED AUX SENSORS



* For use with continuous dimming applications.

ORDERING INFORMATION

Catalog Number	Pack Quantity	Easy Code	UPC	DLC PRODUCT ID
KT-LED100HID-ADJ-EX39-840-D	4	YYT-49	843654134437	PZK0UFWQ
KT-LED100HID-ADJ-EX39-850-D	4	FFQ-28	843654134444	P8F6NNL2

CATALOG NUMBER BREAKDOWN

KT-LED100HID-ADJ-EX39-8XX-D

1 2 3 4 5 6 7 8 9

- 1 Keystone Technologies
- 2 LED Lamp
- 3 Wattage
- 4 Lamp Type
- 5 Adjustable Angle
- 6 Base Type
- 7 80 CRI
- 8 Color Temperature
- 9 Direct Drive