

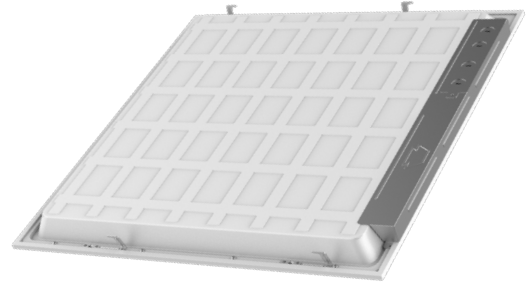


KT-BPLED30-22-8XX-VDIM

BACKLIT LED PANEL LIGHT

DESCRIPTION

2'x2' LED panel light | 30W | 120-277V input | 0-10V dimming



10 YEAR LIMITED WARRANTY

PRODUCT FEATURES

- Aluminum frame featuring stepped edge design detail and gloss white paint for improved aesthetics
- New backlit style design; fits standard T-grid ceilings
- Suitable for recessed or surface mount (with optional accessories)*
- Construction features precise optical lenses over each individual LED, offering optimal light diffusion and consistent surface illumination, with no risk of yellowing over product lifetime
- Suitable for damp locations
- Powered by Keystone 0-10V dimmable LED driver with built-in junction box
- Compatible with Keystone SmartSafe LED emergency backup
- Over 50% energy savings compared to traditional fluorescent troffers
- Operating temp range -20°C/-4°F to 40°C/104°F

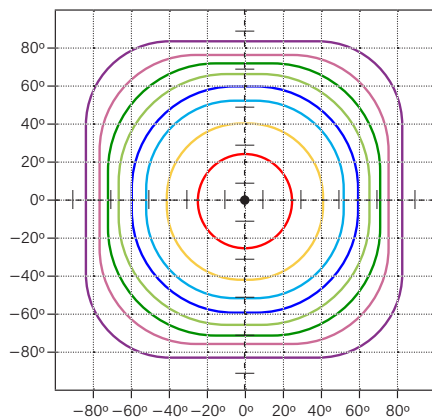
* For use in non-fire rated installations only

PERFORMANCE SPECIFICATIONS

Catalog Number	Input Voltage	Wattage	Color Temperature	Lumen Output	CRI	Power Factor	Efficacy	Lifetime
KT-BPLED30-22-835-VDIM	120-277V	30W	3500K	3,300	>80	>0.9	110 lm/W	50,000 Hours
KT-BPLED30-22-840-VDIM	120-277V	30W	4000K	3,300	>80	>0.9	110 lm/W	50,000 Hours
KT-BPLED30-22-850-VDIM	120-277V	30W	5000K	3,300	>80	>0.9	110 lm/W	50,000 Hours

PHOTOMETRIC SPECIFICATIONS

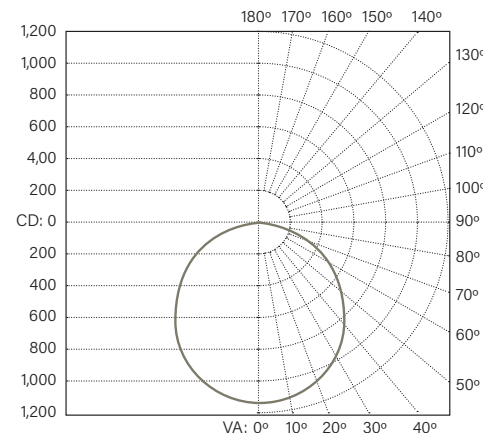
ISOCANDELA PLOT



■ Cd: 992, 90%	■ Cd: 441, 40%
■ Cd: 826, 75%	■ Cd: 331, 30%
■ Cd: 661, 60%	■ Cd: 220, 20%
■ Cd: 551, 50%	■ Cd: 110, 10%

----- Point of Max Cd: 1,103.3

POLAR CANDELA DISTRIBUTION



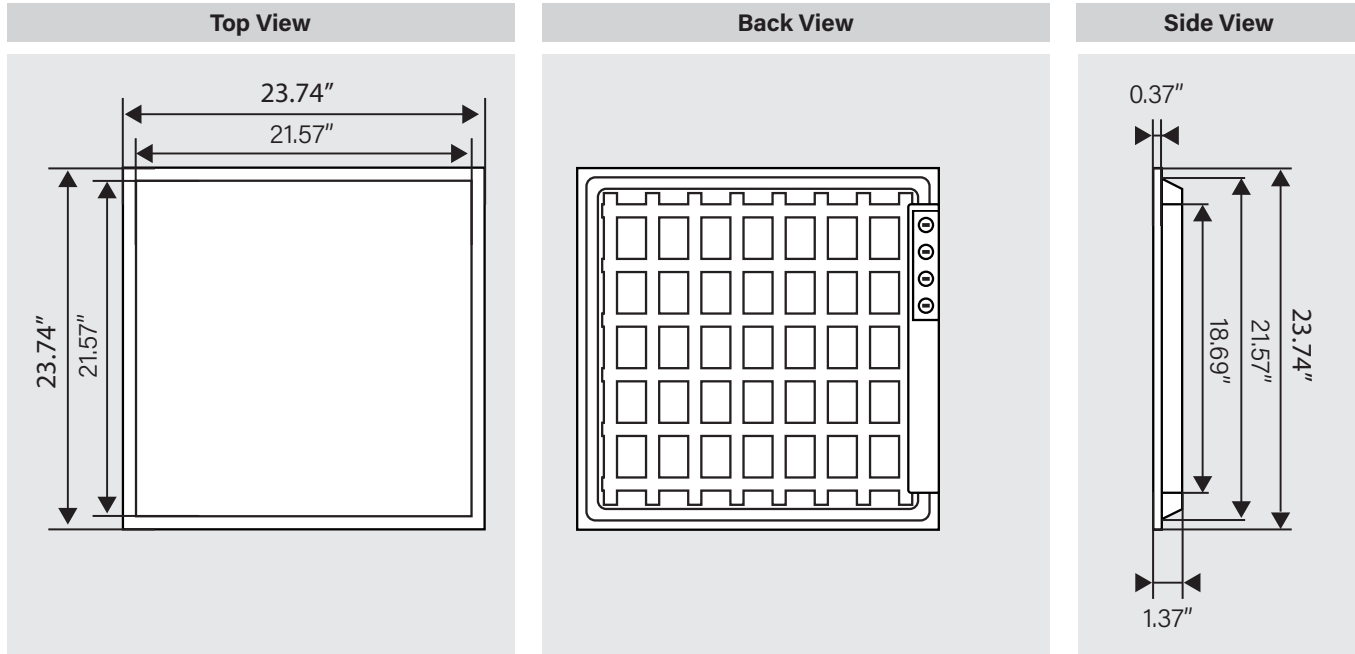
■ 0° H
■ 90° H
■ 22.5° H
■ 45° H
■ 67.5° H

ZONAL LUMEN SUMMARY

Zone	Lumens	% Luminaire
0-30	860.5	26.5%
0-40	1,414.7	43.5%
0-60	2,521.6	77.6%
60-90	720.9	22.2%
70-100	313.0	9.6%
90-120	3.0	0.1%
0-90	3,242.5	99.8%
90-180	6.5	0.2%
0-180	3,249.0	100%

KT-BPLED30-22-8XX-VDIM
BACKLIT LED PANEL LIGHT

PHYSICAL SPECIFICATIONS

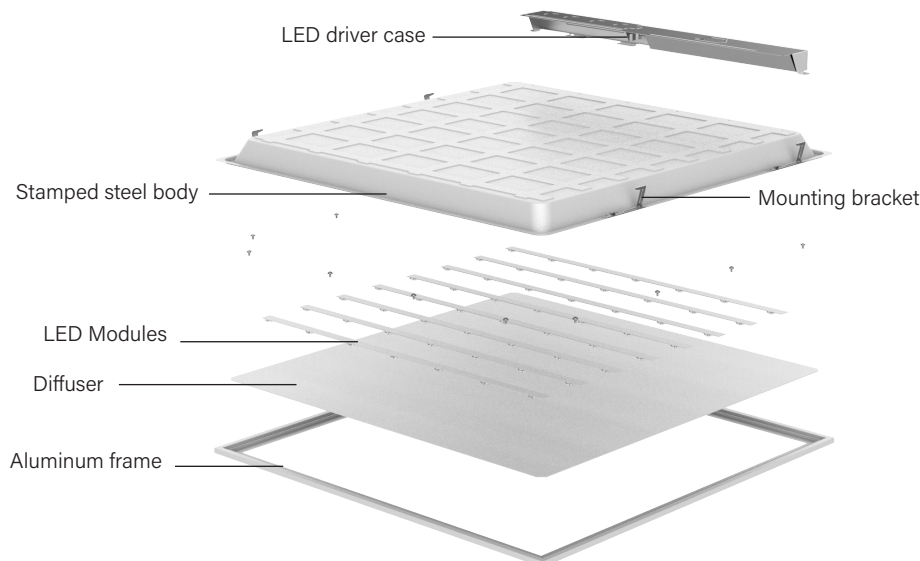


WEIGHT INFORMATION

1 Piece	1 Carton
6.2 lbs	12.4 lbs

EXPLODED VIEW

CONSTRUCTION FEATURES



KT-BPLED30-22-8XX-VDIM

BACKLIT LED PANEL LIGHT

ACCESSORIES (continued)

SENSORS

Factory-Installable OR Field-Installable (field-installable purchased separately)

✓	SUFFIX*	CATALOG NUMBER	DESCRIPTION	UPC	EASY CODE
	/FC1-PIR	KTSL-FC1-UV-KO-PIR	Bluetooth Mesh Wireless Fixture Controller for SmartLoop System with remote mountable daylight and PIR motion sensor. 120-277V. 3A Max Load with 0-10V Dimming	843654129259	MGZ-59



* For factory installation of accessory, add suffix to fixture part number (see ordering examples and instructions on last page of spec sheet).

CORD SETS

Factory-Installable OR Field-Installable (field-installable purchased separately)

✓	SUFFIX*	CATALOG NUMBER	DESCRIPTION	UPC	EASY CODE
	/515P6	KT-CS-515P-6-18/3	Cord set for high bay; 125V NEMA 5-15P; straight blade plug; 6' SJTOW cable; 18/3 wire	843654140124	UKH-26
	/NP10	KT-CS-NP-10-16/3	Cord for high bays; no plug; inners 1/2" strip on both ends; 10' SJTOW cable; 16/3 wire	843654140193	YOH-90
	/NP6	KT-CS-NP-6-16/3	Cord for high bays; no plug; inners 1/2" strip on both ends; 6' SJTOW cable; 16/3 wire	843654140216	HUB-73
	/NP15	KT-CS-NP-15-16/3	Cord for high bays; no plug; inners 1/2" strip on both ends; 15' SJTOW cable; 16/3 wire	843654140209	EYD-18
	/MC13	KT-MC-NP-1-18/3	Metal clad cable for fixtures, No Plug, 1ft long, 18/3 wire (L,N,G)	843654139777	AYT-71
	/MC63	KT-MC-NP-6-18/3	Metal clad cable for fixtures. No Plug. 6ft long. 18/3 wire (L,N,G)	843654134505	EYP-82
	/MC65	KT-MC-NP-6-18/5	Metal clad cable for fixtures. No Plug. 6ft long. 18/5 wire (L,N,G, LV)	843654134512	CBU-56
	/MC66	KT-MC-NP-6-18/6	Metal clad cable for fixtures. No Plug. 6ft long. 18/6 wire (L,S,N,G, LV)	843654164229	KFF-99

* For factory installation of accessory, add suffix to fixture part number (see ordering examples and instructions on last page of spec sheet).

Note: For cord sets not listed here, please contact your Keystone sales rep.

(Accessories continued on next page)

KT-BPLED30-22-8XX-VDIM

BACKLIT LED PANEL LIGHT

ACCESSORIES (continued)

EMERGENCY BACKUP

Factory-Installable OR Field-Installable (field-installable purchased separately)

✓	SUFFIX*	CATALOG NUMBER	DESCRIPTION	UPC	EASY CODE
	/EM5†	KT-EMRG-LED-5C-500-EN /DF	5W, 500 lumen Smart Safe emergency backup with dual flex cables	843654132433	RAR-74
	/EM12†	KT-EMRG-LED-12C-1200-EN /DF	12W, 1200 lumen Smart Safe emergency backup with dual flex cables	890949019900	YCV-23



* For factory installation of accessory, add suffix to fixture part number (see ordering examples and instructions on last page of spec sheet).
† Factory installation of emergency backup units will automatically include any relevant mounting bracket.

Field-Installable / Field-Use ONLY (purchased separately)

CATALOG NUMBER	DESCRIPTION	UPC	EASY CODE
KT-BPLED-EM-22/4-KIT	Emergency LED backup mounting bracket kit for LED high bay fixtures	843654128047	EIG-03



(Accessories continued on next page)

KT-BPLED30-22-8XX-VDIM

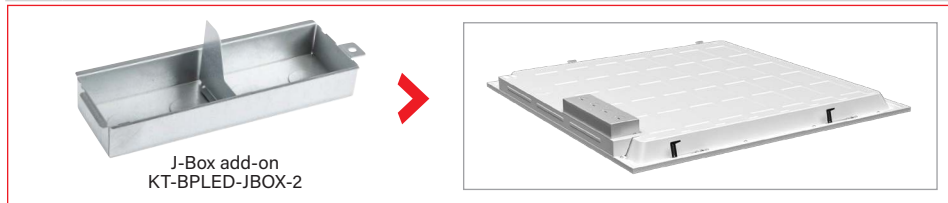
BACKLIT LED PANEL LIGHT

ACCESSORIES (continued)

MOUNTS AND BRACKETS

Factory-Installable OR Field-Installable (field-installable purchased separately)

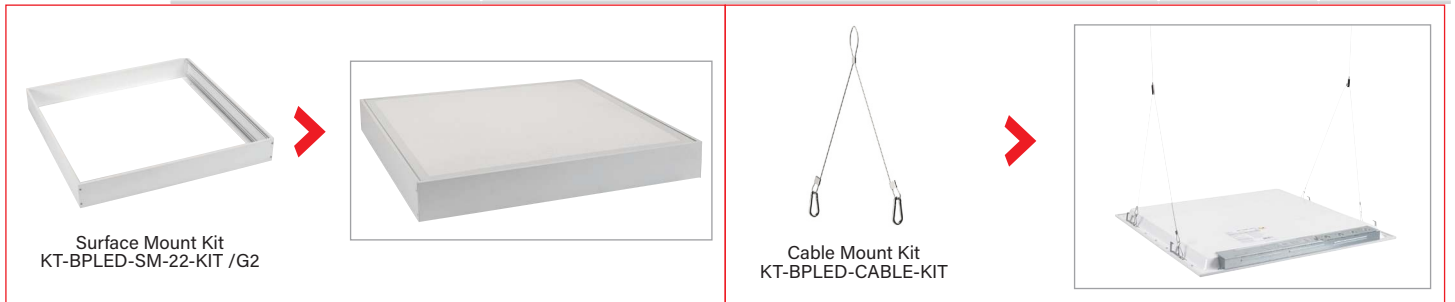
✓	SUFFIX*	CATALOG NUMBER	DESCRIPTION	UPC	EASY CODE
	/JBOX	KT-BPLED-JBOX-1	Larger J-Box add-on for LED Backlit Panels	843654128092	MYW-25



* For factory installation of accessory, add suffix to fixture part number (see ordering examples and instructions on last page of spec sheet).

Field-Installable / Field-Use ONLY (purchased separately)

CATALOG NUMBER	DESCRIPTION	UPC	EASY CODE
KT-BPLED-SM-22-KIT /G2	Surface Mount Kit 2x2 Backlit panels	843654134543	CGY-52
KT-BPLED-CABLE-KIT	Aircraft cable hanging kit for LED high bay fixtures	843654133423	JLB-77



(Accessories continued on next page)



KT-BPLED30-22-8XX-VDIM

BACKLIT LED PANEL LIGHT

ORDERING INFORMATION

CATALOG NUMBER	CARTON QTY.	UPC	EASY CODE	DLC PRODUCT ID
KT-BPLED30-22-835-VDIM	2	RKL-49	843654127712	PCUUT80I
KT-BPLED30-22-840-VDIM	2	HBI-18	843654127729	PQ4WZBP1
KT-BPLED30-22-850-VDIM	2	NMI-68	843654127736	PRPWAH40

CATALOG NUMBER BREAKDOWN

KT-BPLED30-22-8XX-VDIM

1 2 3 4 5 6 7

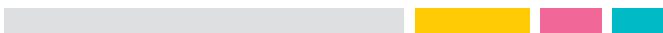
- 1 Keystone Technologies
- 2 Backlit Panel Light LED Fixture
- 3 Wattage
- 4 2' x 2' Nominal Size
- 5 800 Series
- 6 Color Temperature
- 7 0-10V Dimming

ORDERING EXAMPLES

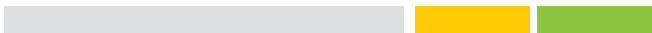
FIXTURE WITH MULTIPLE FACTORY-INSTALLED ACCESSORIES*
KT-BPLED30-22-8XX-VDIM /FC1-PIR/L715P6/EM5/JBOX



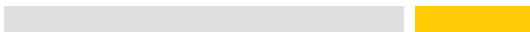
FIXTURE WITH MULTIPLE FACTORY-INSTALLED ACCESSORIES*
KT-BPLED30-22-8XX-VDIM /FC1-PIR/EM5/JBOX



FIXTURE WITH TWO FACTORY-INSTALLED ACCESSORIES*
KT-BPLED30-22-8XX-VDIM /FC1-PIR/L715P6



FIXTURE WITH SINGLE FACTORY-INSTALLED ACCESSORY
KT-BPLED30-22-8XX-VDIM /FC1-PIR



FIXTURE WITH NO FACTORY-INSTALLED ACCESSORIES
KT-BPLED30-22-8XX-VDIM



*When ordering more than one factory-installed accessory, use multiple suffixes as shown in the ordering examples above.
 Note: All accessories can also be ordered separately for field installation using just their regular Catalog Number, UPC, or Easy Code.

KEYSTONE FIXTURE	
SUFFIX	CATALOG NUMBER
	KT-BPLED30-22-8XX-VDIM

SENSORS	
SUFFIX	CATALOG NUMBER
✓ /FC1-PIR	KTSL-FC1-UV-KO-PIR

CORD SETS	
SUFFIX	CATALOG NUMBER
✓ /L715P6	KT-CS-L715P-6-16/3

EMERGENCY BACKUP	
SUFFIX	CATALOG NUMBER
✓ /EM5	KT-EMRG-LED-5C-500-EN /DF

MOUNTS AND BRACKETS	
SUFFIX	CATALOG NUMBER
✓ /JBOX	KT-BPLED-JBOX-1