



TRADITIONAL NON CUT-OFF LED WALL PACK

INSTALLATION INSTRUCTIONS

PLEASE FIND A QUALIFIED ELECTRICIAN FOR INSTALLATION. Please read the instructions before you install and use the luminaire.

APPLICATION

Building mount for exterior illumination needs (including perimeter, pathways, loading docks, and general security lighting requirements)

SAFETY AND ELECTRICAL PARAMETERS

Warning

- To reduce the risk of death, personal injury, or property damage from fire, electric shock, falling parts, cuts/abrasions, and other hazards, read all warnings and instructions included with and/or the fixture box and fixture labels.
- Before installing, servicing, or performing routine maintenance upon this equipment, follow these general precautions.
- Commercial installation, service, and maintenance of luminaires should be performed by a qualified licensed electrician.
- If you are unsure about the installation or maintenance of the luminaires, consult a qualified licensed electrician. Please abide by all relevant country, regional, and local code requirements and regulations when installing this luminaire. Wiring must be in accordance with NEC and all applicable local codes.
- Do not make or alter any holes unnecessarily in an enclosure of wiring or electrical components during the installation. Additional holes in the housing are permitted only for mounting hardware and must be properly sealed with silicone (not provided) in order to maintain watertight operation of the fixture.

Warning

- Turn off electrical power at the fuse or circuit breaker box before wiring fixture to the building power.
- Turn off the electrical power when you perform any maintenance.
- Verify that supply voltage is correct by comparing it with the luminaire label information. Do not install with supply voltage that exceeds the rated input voltage of the luminaire.
- All wiring connections should be capped with UL approved wire connectors.

Caution

- Avoid direct eye exposure to the light source while it is on.
- Account for small parts and destroy/recycle packaging material, as these may be hazardous to children.
- Risk of Burn. Disconnect power and allow fixture to cool before handling/servicing.

Notice

- All fixture installs must be properly grounded.
- Minimum of 75C supply conductors.
- Specifications and dimensions subject to change without notice. Consult Keystone with any questions or concerns.
- Fixture is IP65 Rated: Suitable for wet location.
- Ensure ambient operating temperature between $-40^{\circ}\text{C}/-40^{\circ}\text{F}$ to $50^{\circ}\text{C}/122^{\circ}\text{F}$ is maintained. Exceeding these temperature ranges will void warranty and may reduce lifetime or cause performance issues.
- Inspect fixture for any damages before installing. If there is any damage, please do not install and contact Keystone or authorized distributor for resolution.
- Fixture should not be recessed. Housing must be mounted with lens facing towards the ground.
- Fixture is intended for outdoor usage but should not be mounted less than 80" from the ground.

COMPONENTS INCLUDED IN KIT

Part	Quantity
Traditional LED Wall Pack	1
Instruction sheet	1

Caution: Before installing, make certain that AC power to the fixture is off.

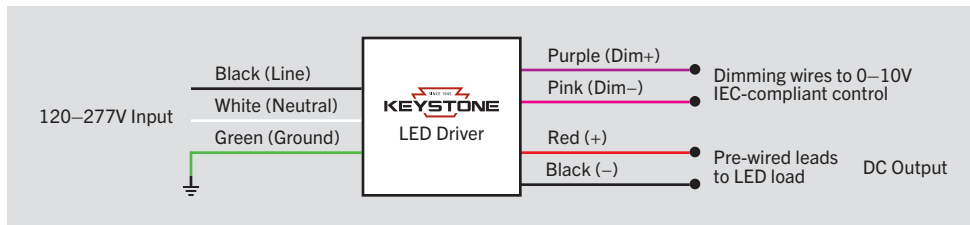
Caution: The electrical rating of this product is 120–277V. Installer must confirm that there is 120–277V at the fixture before installation.

ELECTRICAL SPECIFICATIONS

Catalog Number	Wattage	Lumens	Lumens Below 90°	Dimming	CCT	Efficacy	CRI	Input Voltage	Mounting	Photocell	Housing Color	Rated Life	Legacy Equivalent
KT-WPLED35-M1-8CSB-VDIM	35W	4865 lm	3955 lm	0–10V	3000K	139 lm/W	>80	120–277V	Wall-mount	Included	Bronze	50,000 hrs	150W MH
		5040 lm	4100 lm		4000K	144 lm/W							
		4690 lm	3815 lm		5000K	134 lm/W							
KT-WPLED55-M1-8CSB-VDIM	55W	7645 lm	6345 lm		3000K	139 lm/W							175–250W MH
		7920 lm	6570 lm		4000K	144 lm/W							
		7370 lm	6115 lm		5000K	134 lm/W							
KT-WPLED80-M1-8CSB-VDIM	80W	11200 lm	9180 lm		3000K	140 lm/W							250–320W MH
		11600 lm	9510 lm		4000K	145 lm/W							
		10800 lm	8855 lm		5000K	135 lm/W							
KT-WPLED120-L1-8CSB-VDIM	120W	16200 lm	14255 lm		3000K	135 lm/W							400W MH
		16800 lm	14780 lm		4000K	140 lm/W							
		15600 lm	13725 lm		5000K	130 lm/W							

GENERAL SETUP INSTRUCTIONS

GENERAL WIRING DIAGRAM



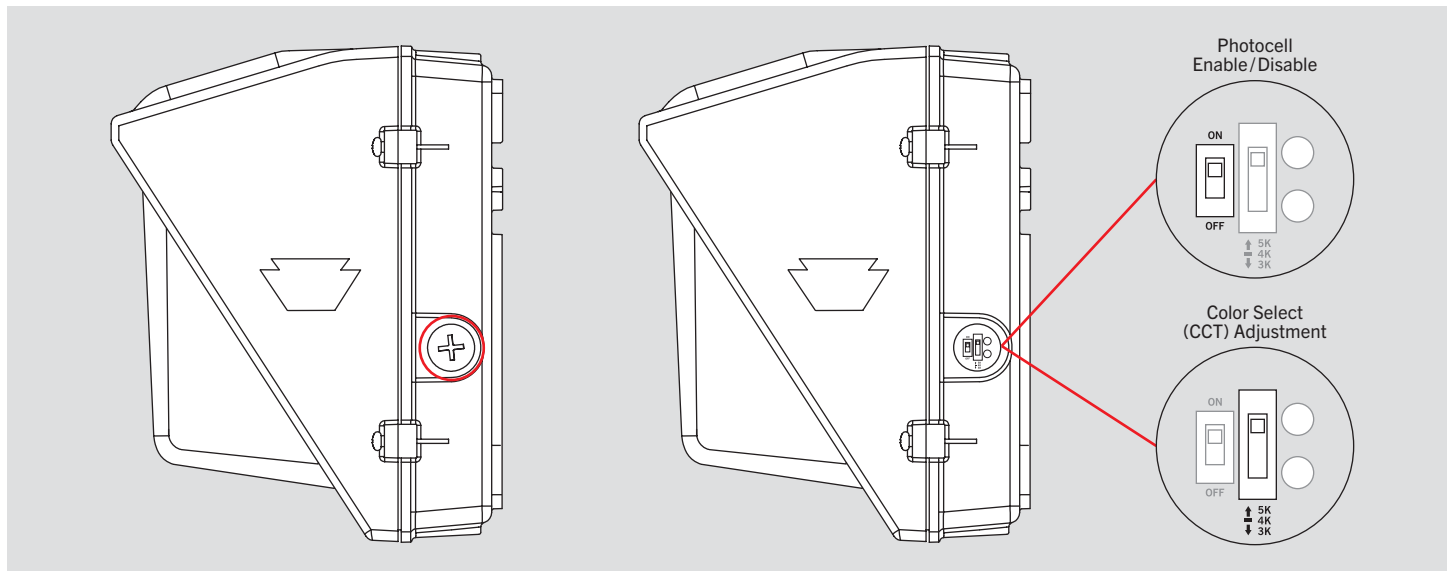
Note: *In accordance with NEC-20 410.69 2022, all 0-10V negative wires have been updated from gray to pink. Please contact Keystone for details

PHOTOCELL ENABLE/DISABLE

This fixture is equipped with a dusk-to-dawn photocell behind the translucent knock-out (KO) cover. Adjust the dip switch to enable (ON) or disable (OFF) the photocell function (see illustrations below). Fixture comes preset with photocell enabled unless otherwise noted.

COLOR SELECT (CCT) ADJUSTMENT

This fixture is equipped with Color Select technology. There is an adjustable dip switch behind the translucent knock-out (KO) cover to change CCT between 5000K, 4000K, and 3000K (see illustrations below). Fixture comes preset at 5000K unless otherwise noted.

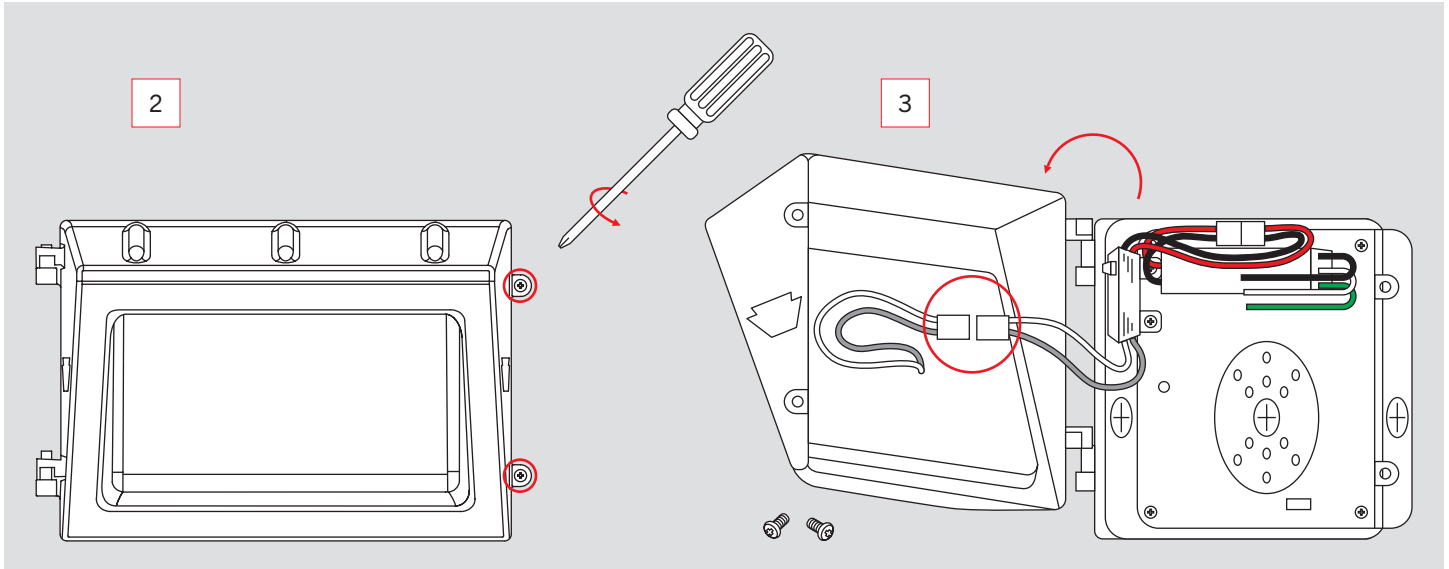


INSTALLATION INSTRUCTIONS

OPTION 1: Installation via Back Side Wiring of Junction Box

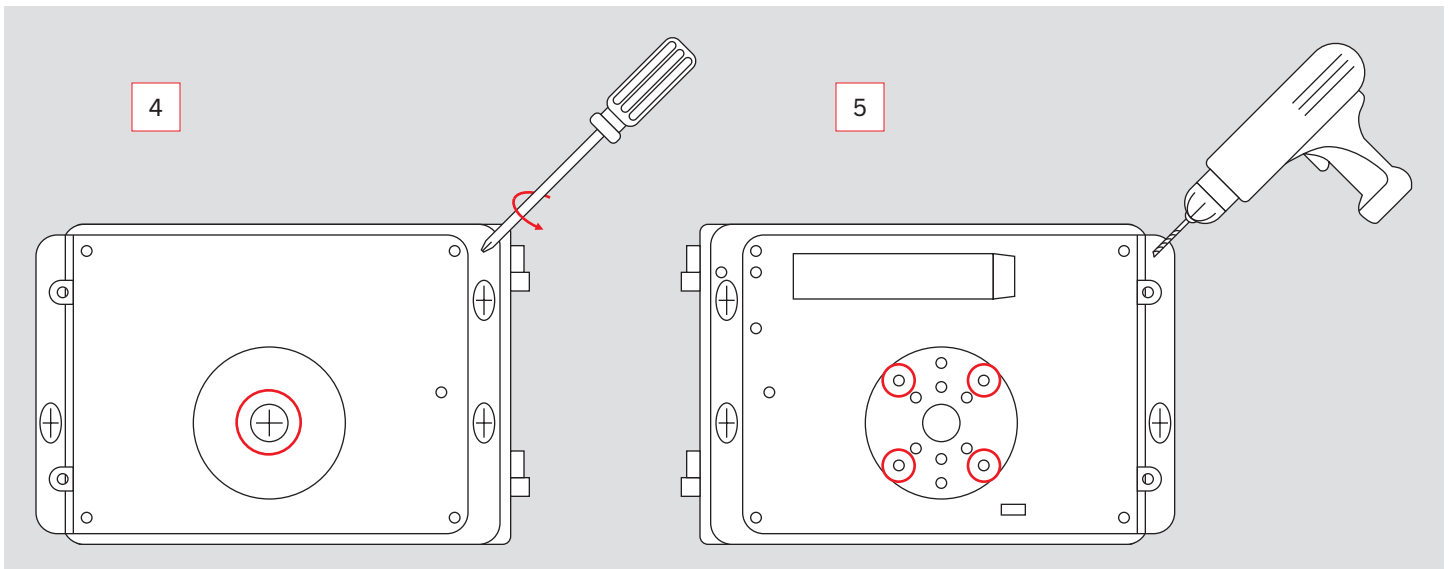
1. Ensure that power is off before beginning installation.
2. Open fixture by loosening 2 screws.
3. Disconnect wiring to LED's quick-connector and remove entire door assembly.

(see illustrations below)



4. Using a screwdriver, remove the 1/2" threaded plug in the center of the junction box drilling template.
5. Using the junction box drilling template on back of housing as a reference, drill out the appropriate holes that align with junction box accommodations on site (drilling template matches most standard junction box varieties).

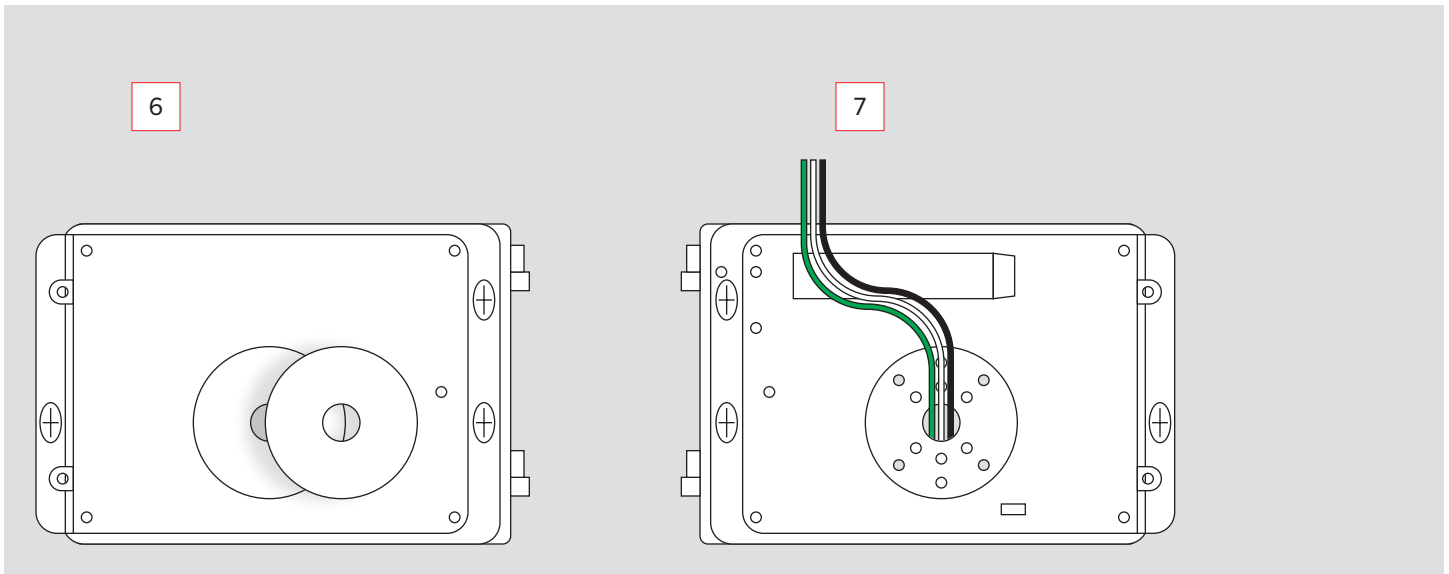
(see illustrations below)



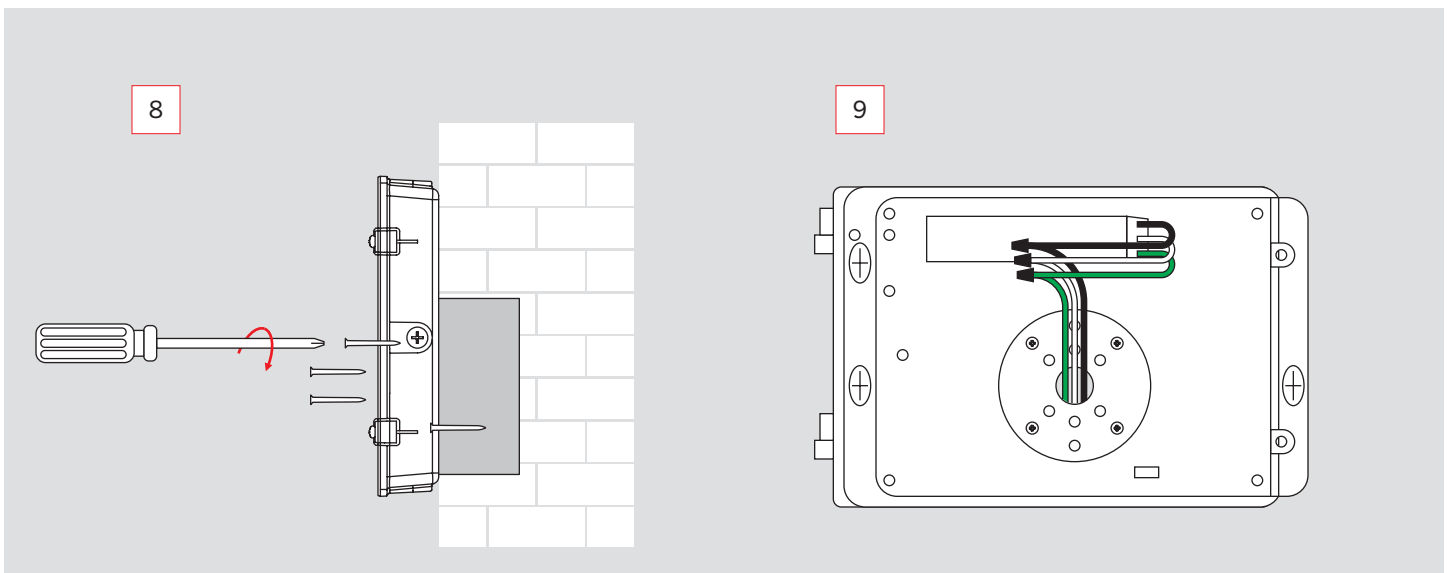
(Installation Instructions continued on next page)

INSTALLATION INSTRUCTIONS (continued)**OPTION 1: Installation via Back Side Wiring of Junction Box (continued)**

6. Attach an EVA foam pad to the outside of fixture housing where drilling template mates with junction box/building exterior.
 7. Thread input power wiring through the 1/2" KO hole on back side of housing.
- (see illustrations below)



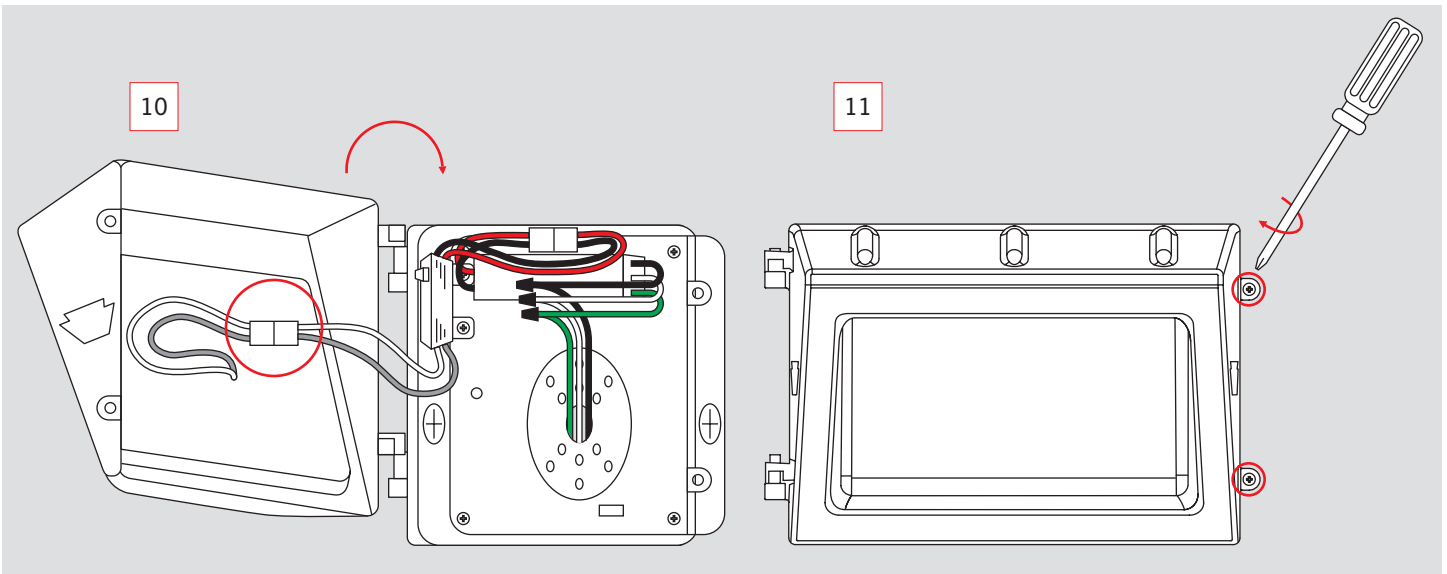
8. Secure fixture to the building / junction box with suitable screws/hardware for the application, using the holes drilled in step 5. Ensure that EVA foam on back side of fixture is compressed, and that silicone is applied on top of drill / screw locations to maintain watertight operation.
 9. Complete wiring to input power wires (see **General Wiring Diagram** on page 2).
- (see illustrations below)



(Installation Instructions continued on next page)

INSTALLATION INSTRUCTIONS (continued)**OPTION 1: Installation via Back Side Wiring of Junction Box (continued)**

10. Re-install the fixture door assembly and connect wiring from LED to power supply using quick-connector.
 11. Close the door assembly and tighten the 2 screws. Be sure fixture gasket is seated properly and fully compressed.
- (see illustrations below)

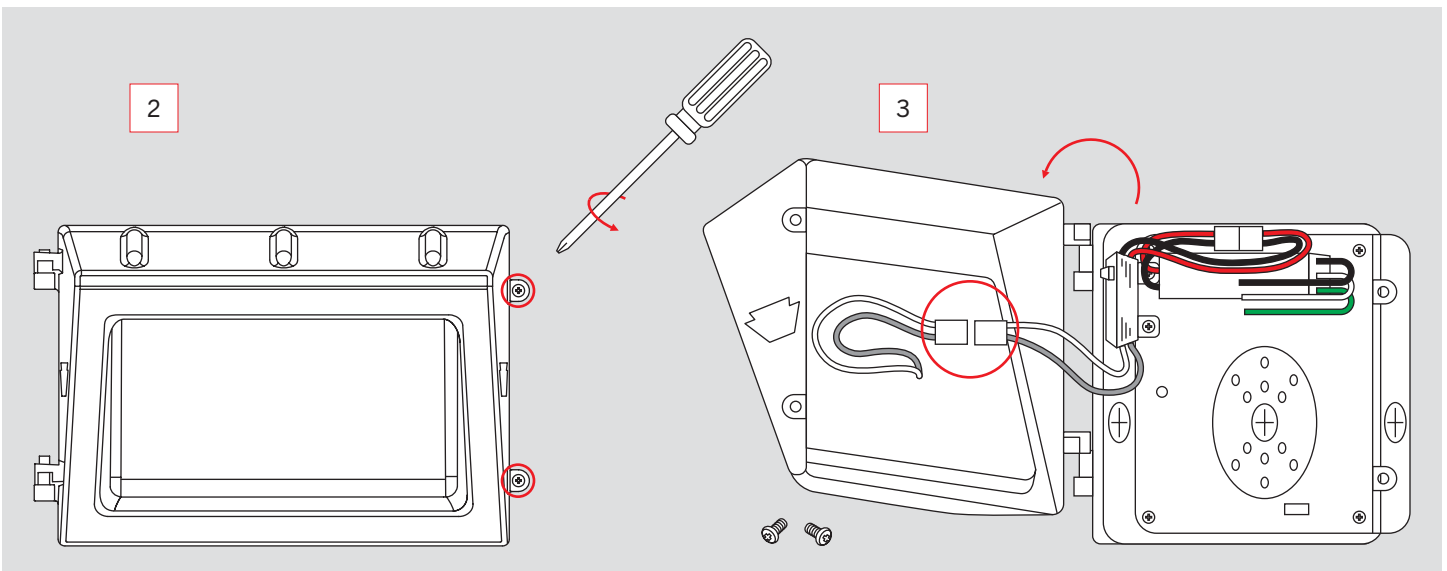


12. Confirm that fixture is securely mounted to building exterior and then restore power to the fixture.

OPTION 2: Installation via Side/Bottom Wiring of 1/2" Threaded Knock-Out

1. Ensure that power is off before beginning installation.
2. Open fixture by loosening 2 screws.
3. Disconnect wiring to LED's quick-connector and remove entire door assembly.

(see illustrations below)

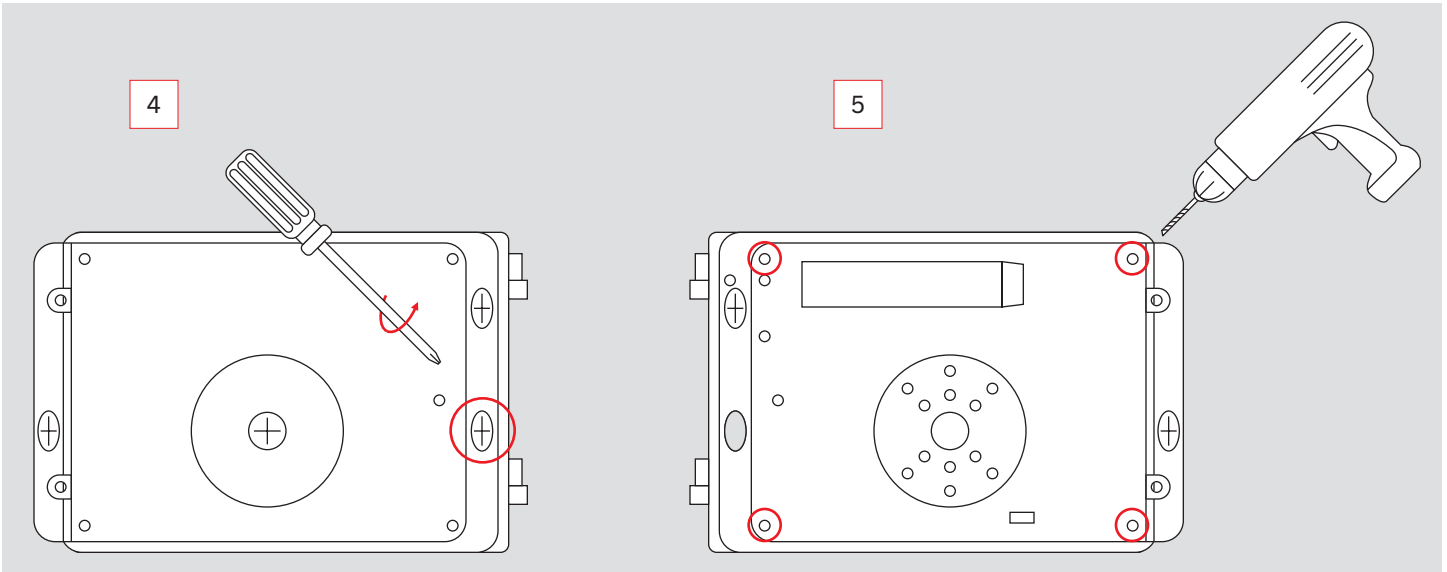


(Installation Instructions continued on next page)

INSTALLATION INSTRUCTIONS (continued)**OPTION 2: Installation via Side/Bottom Wiring of 1/2" Threaded Knock-Out (continued)**

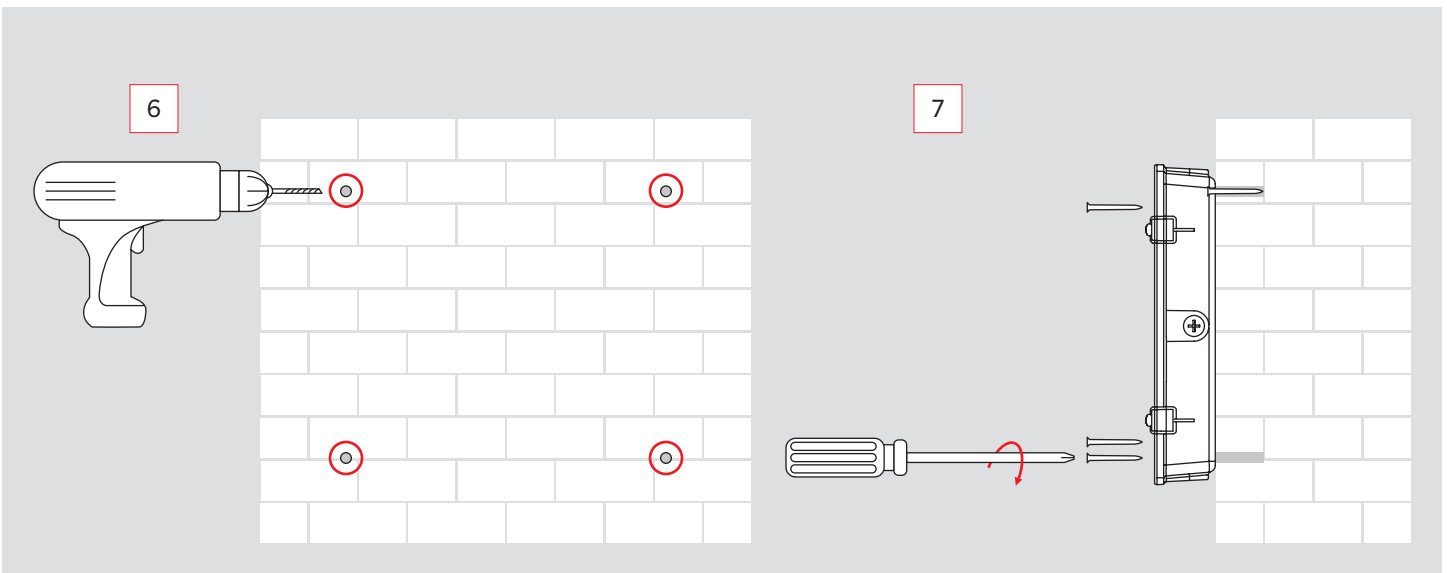
4. Using a screwdriver, remove the 1/2" threaded plug on the side of the junction box drilling template.
5. Drill out the appropriate holes needed for proper lag bolt mounting near the corners of the backplate, based on suitable structural accommodations on site. A minimum of (4) bolts is recommend for proper security.

(see illustrations below)



6. Mark and drill appropriate holes in the building walls for lag bolt mounting.
7. Secure fixture to the wall. Ensure that silicone is applied around bolt locations to maintain watertight operation.

(see illustrations below)

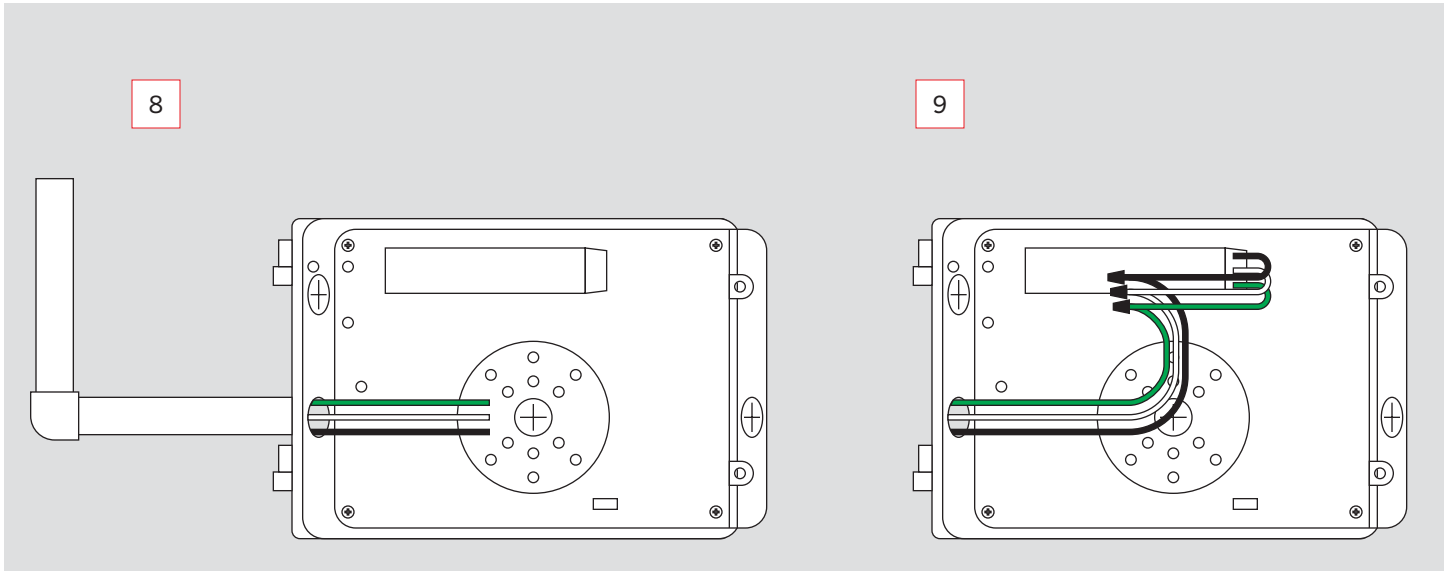


(Installation Instructions continued on next page)

INSTALLATION INSTRUCTIONS (continued)**OPTION 2: Installation via Side/Bottom Wiring of 1/2" Threaded Knock-Out (continued)**

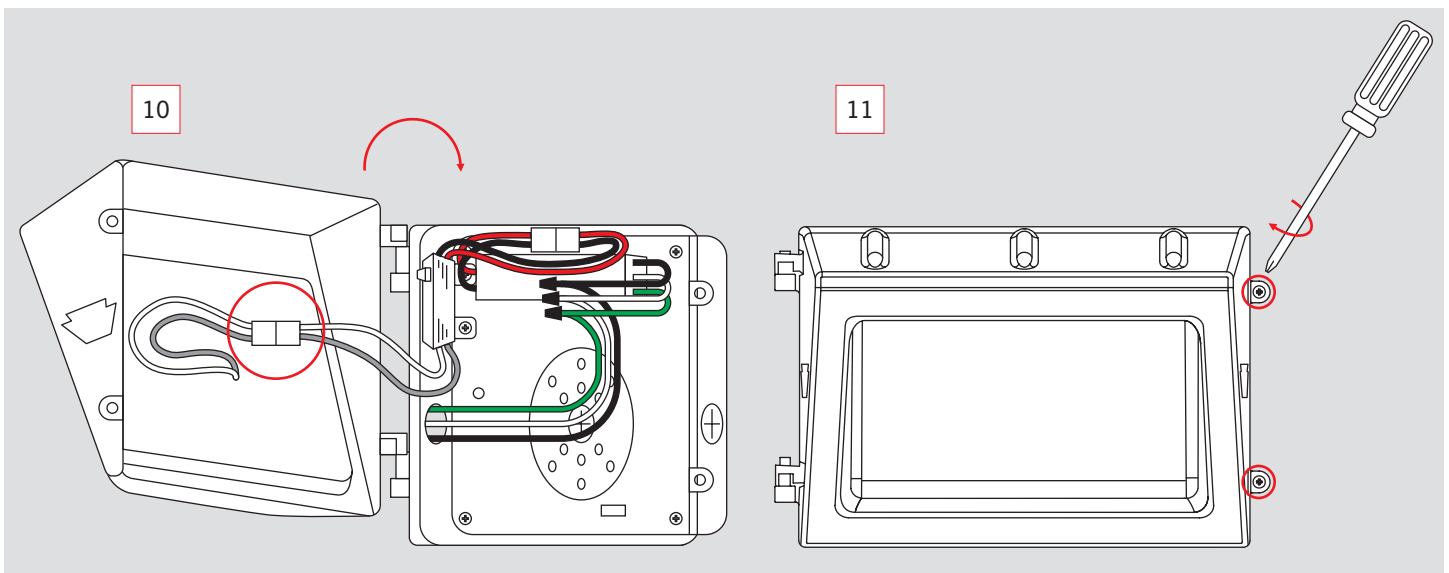
8. Thread input power wiring through the 1/2" KO hole on side of housing.
9. Complete wiring to input power wires (see **General Wiring Diagram** on page 2). Ensure that conduit entry to fixture is watertight, using Teflon tape or silicone sealant.

(see illustrations below)



10. Re-install the fixture door assembly and connect wiring from LED to power supply using quick-connector.
11. Close the door assembly and tighten the 2 screws. Be sure fixture gasket is seated properly and fully compressed.

(see illustrations below)



12. Confirm that fixture is securely mounted to building exterior and then restore power to the fixture.

SAVE THESE INSTRUCTIONS